

JMAP  
REGENTS BY STATE  
STANDARD: TOPIC

NY Algebra II Regents Exam Questions from  
Spring 2015 to August 2018 by State Standard: Topic

[www.jmap.org](http://www.jmap.org)

# TABLE OF CONTENTS

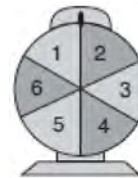
<u>TOPIC</u>	<u>CCSS: SUBTOPIC</u>	<u>QUESTION NUMBER</u>
GRAPHS AND STATISTICS	S.IC.A.2, S.IC.B.3-6: Analysis of Data .....	1-27
	S.ID.B.6: Regression .....	28-31
	S.ID.A.4: Normal Distributions .....	32-40
PROBABILITY	S.CP.B.7: Theoretical Probability.....	41-42
	S.CP.A.2: Probability of Compound Events.....	43-45
	S.CP.A.1: Venn Diagrams .....	46
	S.CP.A.3-4, S.CP.B.6: Conditional Probability.....	47-56
RATE	F.IF.B.6: Rate of Change .....	57-63
QUADRATICS	A.REI.B.4: Solving Quadratics.....	64-70
	A.REI.B.4: Complex Conjugate Root Theorem .....	71
	G.GPE.A.2: Graphing Quadratic Functions .....	72-79
SYSTEMS	A.REI.C.6: Solving Linear Systems .....	80-84
	A.REI.C.7, A.REI.D.11: Quadratic-Linear Systems .....	85-91
	A.REI.D.11: Other Systems.....	92-104
POWERS	A.SSE.B.3, F.BF.A.1, F.LE.A.2, F.LE.B.5: Modeling Exponential Functions .....	105-119
	F.IF.B.4: Evaluating Logarithmic Expressions .....	120
	F.IF.C.7: Graphing Exponential Functions.....	121-125
	F.IF.C.7: Graphing Logarithmic Functions .....	126-129
	A.CED.A.1, F.LE.A.4: Exponential Equations, Exponential Growth, Exponential Decay.....	130-142
POLYNOMIALS	A.SSE.A.2: Factoring Polynomials, Factoring the Difference of Perfect Squares .....	143-152
	A.APR.B.3: Zeros of Polynomials.....	153-157
	A.APR.B.3: Solving Polynomial Equations .....	158
	F.BF.B.4, F.IF.C.7: Graphing Polynomial Functions.....	159-170
	A.APR.B.2: Remainder Theorem .....	171-180
	A.APR.C.4: Polynomial Identities.....	181-188
RADICALS	N.RN.A.2: Operations with Radicals.....	189-191
	A.REI.A.2: Solving Radicals.....	192-200
	N.RN.A.1-2: Radicals and Rational Exponents.....	201-211
	N.CN.A.2: Operations with Complex Numbers .....	212-220
RATIONALS	A.APR.D.6: Undefined Rationals.....	221
	A.APR.D.6: Expressions with Negative Expressions.....	222
	A.APR.D.6: Rational Expressions.....	223-229
	A.APR.D.6: Division of Polynomials.....	230-232
	A.CED.A.1: Modeling Rationals.....	233-236
	A.REI.A.2: Solving Rationals .....	237-245
FUNCTIONS	F.BF.A.1: Operations with Functions.....	246-251
	F.IF.C.9: Comparing Functions .....	252-256
	F.BF.B.3: Transformations with Functions .....	257
	F.BF.B.3: Even and Odd Functions.....	258-261
	F.BF.B.4: Inverse of Functions.....	262-268
SEQUENCES AND SERIES	F.LE.A.2, F.IF.A.3, F.BF.A.2: Sequences.....	269-283
	F.BF.B.6: Sigma Notation .....	284
	A.SSE.B.4: Series .....	285-292

TRIGONOMETRY	F.TF.A.1-2: Unit Circle ..... 293-294
	F.TF.A.2: Reciprocal Trigonometric Functions ..... 295
	F.TF.A.2: Reference Angles ..... 296
	F.TF.A.2, F.TF.C.8: Determining Trigonometric Functions ..... 297-303
	F.TF.C.8: Simplifying Trigonometric Identities ..... 304
	F.TF.B.5: Modeling Trigonometric Functions ..... 305-307
F.IF.B.4, F.IF.C.7: Graphing Trigonometric Functions ..... 308-326	
CONICS	G.GPE.A.1: Equations of Conics ..... 327

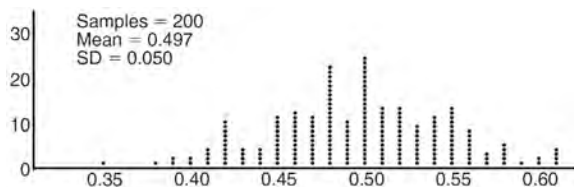
**Algebra II Regents Exam Questions by State Standard: Topic**

**GRAPHS AND STATISTICS**

S.IC.A.2, S.IC.B.3-6: ANALYSIS OF DATA



- 1 Anne has a coin. She does not know if it is a fair coin. She flipped the coin 100 times and obtained 73 heads and 27 tails. She ran a computer simulation of 200 samples of 100 fair coin flips. The output of the proportion of heads is shown below.



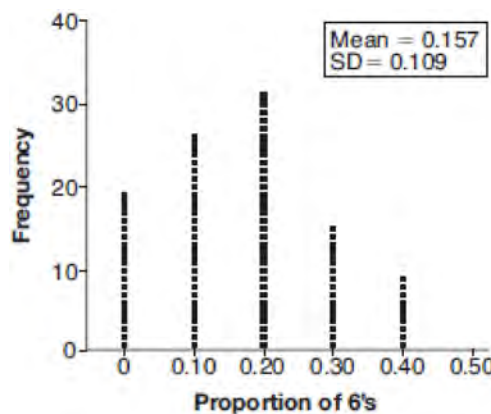
Given the results of her coin flips and of her computer simulation, which statement is most accurate?

- 1 73 of the computer's next 100 coin flips will be heads.
  - 2 50 of her next 100 coin flips will be heads.
  - 3 Her coin is not fair.
  - 4 Her coin is fair.
- 2 An orange-juice processing plant receives a truckload of oranges. The quality control team randomly chooses three pails of oranges, each containing 50 oranges, from the truckload. Identify the sample and the population in the given scenario. State *one* conclusion that the quality control team could make about the population if 5% of the sample was found to be unsatisfactory.
- 3 A game spinner is divided into 6 equally sized regions, as shown in the diagram below.

For Miles to win, the spinner must land on the number 6. After spinning the spinner 10 times, and losing all 10 times, Miles complained that the spinner is unfair. At home, his dad ran 100 simulations of spinning the spinner 10 times,

assuming the probability of winning each spin is  $\frac{1}{6}$ .

The output of the simulation is shown in the diagram below.

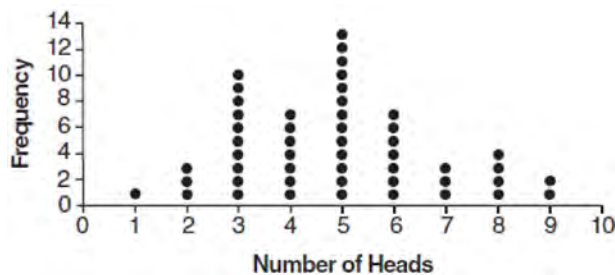


Which explanation is appropriate for Miles and his dad to make?

- 1 The spinner was likely unfair, since the number 6 failed to occur in about 20% of the simulations.
- 2 The spinner was likely unfair, since the spinner should have landed on the number 6 by the sixth spin.
- 3 The spinner was likely not unfair, since the number 6 failed to occur in about 20% of the simulations.
- 4 The spinner was likely not unfair, since in the output the player wins once or twice in the majority of the simulations.

4 Mrs. Jones had hundreds of jelly beans in a bag that contained equal numbers of six different flavors. Her student randomly selected four jelly beans and they were all black licorice. Her student complained and said "What are the odds I got all of that kind?" Mrs. Jones replied, "simulate rolling a die 250 times and tell me if four black licorice jelly beans is unusual." Explain how this simulation could be used to solve the problem.

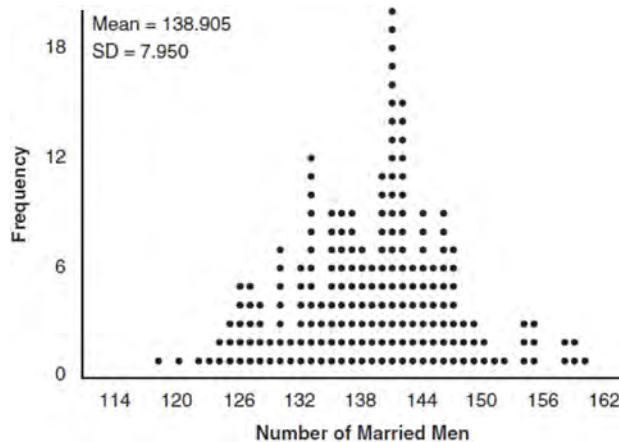
5 The results of simulating tossing a coin 10 times, recording the number of heads, and repeating this 50 times are shown in the graph below.



Based on the results of the simulation, which statement is *false*?

- Five heads occurred most often, which is consistent with the theoretical probability of obtaining a heads.
- Eight heads is unusual, as it falls outside the middle 95% of the data.
- Obtaining three heads or fewer occurred 28% of the time.
- Seven heads is not unusual, as it falls within the middle 95% of the data.

6 In a random sample of 250 men in the United States, age 21 or older, 139 are married. The graph below simulated samples of 250 men, 200 times, assuming that 139 of the men are married.



- Based on the simulation, create an interval in which the middle 95% of the number of married men may fall. Round your answer to the *nearest integer*.
- A study claims "50 percent of men 21 and older in the United States are married." Do your results from part a contradict this claim? Explain.

7 Describe how a controlled experiment can be created to examine the effect of ingredient X in a toothpaste.

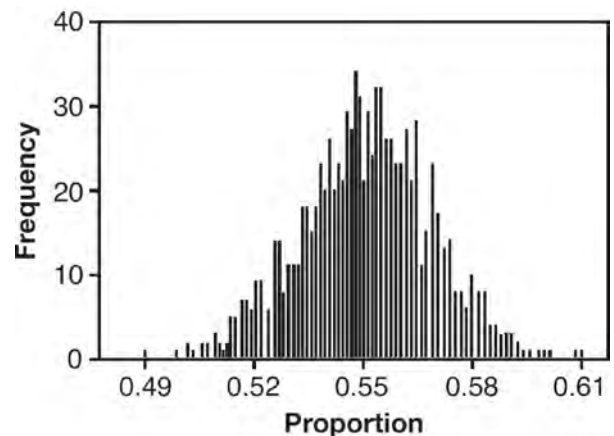
- 8 Cheap and Fast gas station is conducting a consumer satisfaction survey. Which method of collecting data would most likely lead to a biased sample?
- 1 interviewing every 5th customer to come into the station
  - 2 interviewing customers chosen at random by a computer at the checkout
  - 3 interviewing customers who call an 800 number posted on the customers' receipts
  - 4 interviewing every customer who comes into the station on a day of the week chosen at random out of a hat
- 9 Which statement(s) about statistical studies is true?
- I. A survey of all English classes in a high school would be a good sample to determine the number of hours students throughout the school spend studying.
  - II. A survey of all ninth graders in a high school would be a good sample to determine the number of student parking spaces needed at that high school.
  - III. A survey of all students in one lunch period in a high school would be a good sample to determine the number of hours adults spend on social media websites.
  - IV. A survey of all Calculus students in a high school would be a good sample to determine the number of students throughout the school who don't like math.
- 1 I, only
  - 2 II, only
  - 3 I and III
  - 4 III and IV
- 10 Which statement about statistical analysis is *false*?
- 1 Experiments can suggest patterns and relationships in data.
  - 2 Experiments can determine cause and effect relationships.
  - 3 Observational studies can determine cause and effect relationships.
  - 4 Observational studies can suggest patterns and relationships in data.
- 11 Which scenario is best described as an observational study?
- 1 For a class project, students in Health class ask every tenth student entering the school if they eat breakfast in the morning.
  - 2 A social researcher wants to learn whether or not there is a link between attendance and grades. She gathers data from 15 school districts.
  - 3 A researcher wants to learn whether or not there is a link between children's daily amount of physical activity and their overall energy level. During lunch at the local high school, she distributed a short questionnaire to students in the cafeteria.
  - 4 Sixty seniors taking a course in Advanced Algebra Concepts are randomly divided into two classes. One class uses a graphing calculator all the time, and the other class never uses graphing calculators. A guidance counselor wants to determine whether there is a link between graphing calculator use and students' final exam grades.

- 12 The operator of the local mall wants to find out how many of the mall's employees make purchases in the food court when they are working. She hopes to use these data to increase the rent and attract new food vendors. In total, there are 1023 employees who work at the mall. The best method to obtain a random sample of the employees would be to survey
- 1 all 170 employees at each of the larger stores
  - 2 50% of the 90 employees of the food court
  - 3 every employee
  - 4 every 30th employee entering each mall entrance for one week
- 13 Chuck's Trucking Company has decided to initiate an Employee of the Month program. To determine the recipient, they put the following sign on the back of each truck.



The driver who receives the highest number of positive comments will win the recognition. Explain *one* statistical bias in this data collection method.

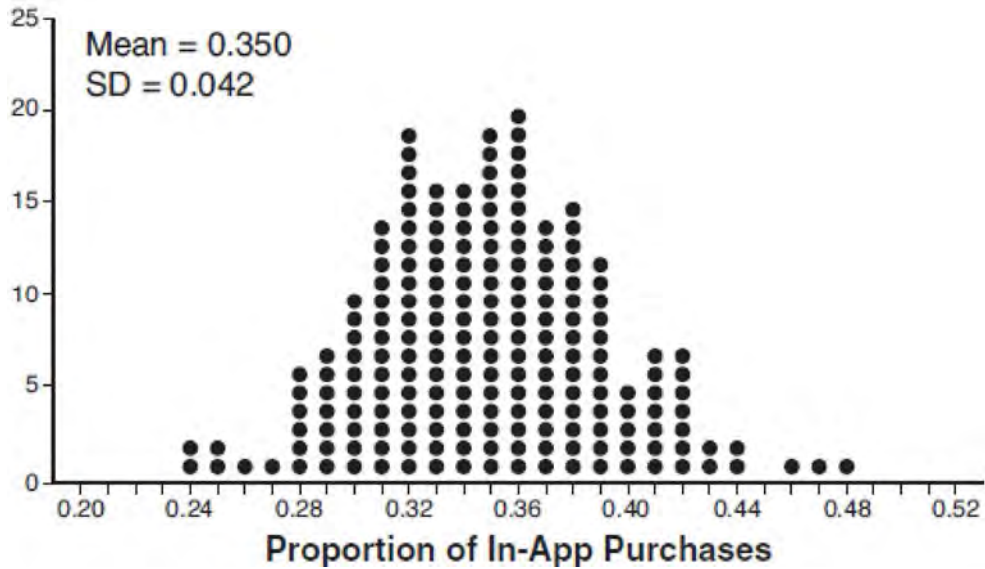
- 14 A researcher randomly divides 50 bean plants into two groups. He puts one group by a window to receive natural light and the second group under artificial light. He records the growth of the plants weekly. Which data collection method is described in this situation?
- 1 observational study
  - 2 controlled experiment
  - 3 survey
  - 4 systematic sample
- 15 A candidate for political office commissioned a poll. His staff received responses from 900 likely voters and 55% of them said they would vote for the candidate. The staff then conducted a simulation of 1000 more polls of 900 voters, assuming that 55% of voters would vote for their candidate. The output of the simulation is shown in the diagram below.



Given this output, and assuming a 95% confidence level, the margin of error for the poll is closest to

- 1 0.01
- 2 0.03
- 3 0.06
- 4 0.12

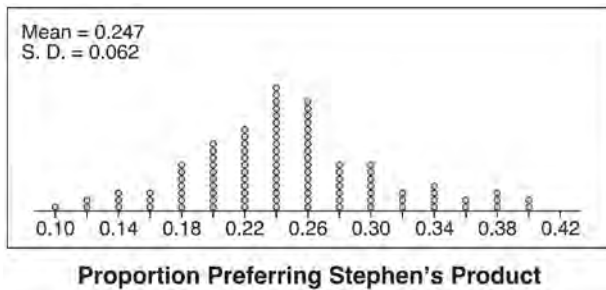
- 16 Some smart-phone applications contain "in-app" purchases, which allow users to purchase special content within the application. A random sample of 140 users found that 35 percent made in-app purchases. A simulation was conducted with 200 samples of 140 users assuming 35 percent of the samples make in-app purchases. The approximately normal results are shown below.



Considering the middle 95% of the data, determine the margin of error, to the *nearest hundredth*, for the simulated results. In the given context, explain what this value represents.

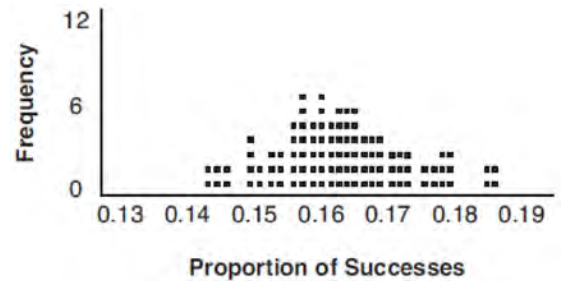


17 Stephen's Beverage Company is considering whether to produce a new brand of cola. The company will launch the product if at least 25% of cola drinkers will buy the product. Fifty cola drinkers are randomly selected to take a blind taste-test of products *A*, *B*, and the new product. Nine out of fifty participants preferred Stephen's new cola to products *A* and *B*. The company then devised a simulation based on the requirement that 25% of cola drinkers will buy the product. Each dot in the graph shown below represents the proportion of people who preferred Stephen's new product, each of sample size 50, simulated 100 times.



Assume the set of data is approximately normal and the company wants to be 95% confident of its results. Does the sample proportion obtained from the blind taste-test, nine out of fifty, fall within the margin of error developed from the simulation? Justify your answer. The company decides to continue developing the product even though only nine out of fifty participants preferred its brand of cola in the taste-test. Describe how the simulation data could be used to support this decision.

18 A study conducted in 2004 in New York City found that 212 out of 1334 participants had hypertension. Kim ran a simulation of 100 studies based on these data. The output of the simulation is shown in the diagram below.



At a 95% confidence level, the proportion of New York City residents with hypertension and the margin of error are closest to

- 1 proportion  $\approx$  .16; margin of error  $\approx$  .01
- 2 proportion  $\approx$  .16; margin of error  $\approx$  .02
- 3 proportion  $\approx$  .01; margin of error  $\approx$  .16
- 4 proportion  $\approx$  .02; margin of error  $\approx$  .16

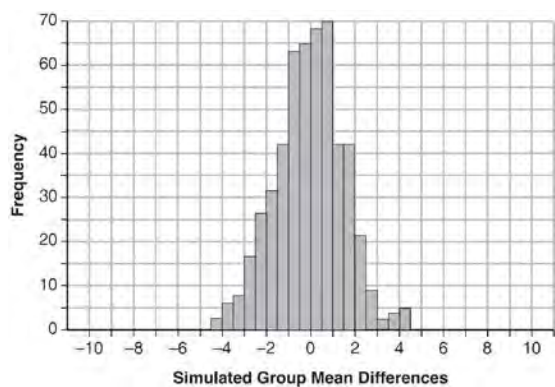
Algebra II Regents Exam Questions by State Standard: Topic

[www.jmap.org](http://www.jmap.org)

- 19 Seventy-two students are randomly divided into two equally-sized study groups. Each member of the first group (group 1) is to meet with a tutor after school twice each week for one hour. The second group (group 2), is given an online subscription to a tutorial account that they can access for a maximum of two hours each week. Students in both groups are given the same tests during the year. A summary of the two groups' final grades is shown below:

	Group 1	Group 2
$\bar{x}$	80.16	83.8
$S_x$	6.9	5.2

Calculate the mean difference in the final grades (group 1 – group 2) and explain its meaning in the context of the problem. A simulation was conducted in which the students' final grades were rerandomized 500 times. The results are shown below.

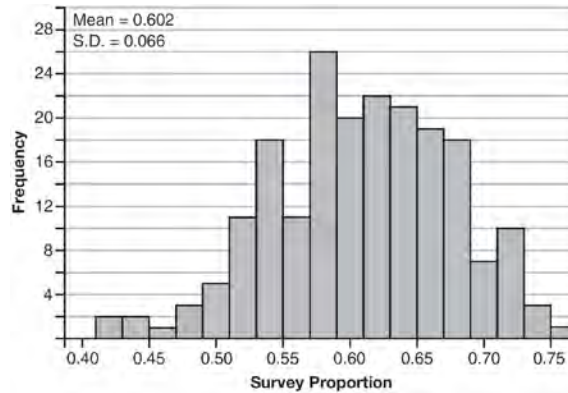


Use the simulation to determine if there is a significant difference in the final grades. Explain your answer.

Algebra II Regents Exam Questions by State Standard: Topic

[www.jmap.org](http://www.jmap.org)

- 20 Fifty-five students attending the prom were randomly selected to participate in a survey about the music choice at the prom. Sixty percent responded that a DJ would be preferred over a band. Members of the prom committee thought that the vote would have 50% for the DJ and 50% for the band. A simulation was run 200 times, each of sample size 55, based on the premise that 60% of the students would prefer a DJ. The approximate normal simulation results are shown below.



Using the results of the simulation, determine a plausible interval containing the middle 95% of the data. Round all values to the *nearest hundredth*. Members of the prom committee are concerned that a vote of all students attending the prom may produce a 50% – 50% split. Explain what statistical evidence supports this concern.

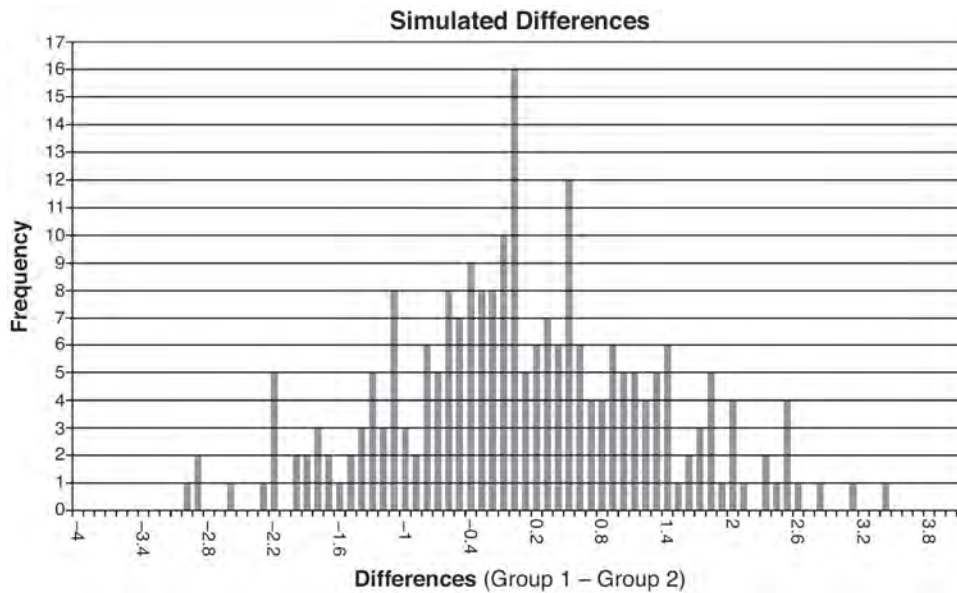
Algebra II Regents Exam Questions by State Standard: Topic

[www.jmap.org](http://www.jmap.org)

- 21 Ayva designed an experiment to determine the effect of a new energy drink on a group of 20 volunteer students. Ten students were randomly selected to form group 1 while the remaining 10 made up group 2. Each student in group 1 drank one energy drink, and each student in group 2 drank one cola drink. Ten minutes later, their times were recorded for reading the same paragraph of a novel. The results of the experiment are shown below.

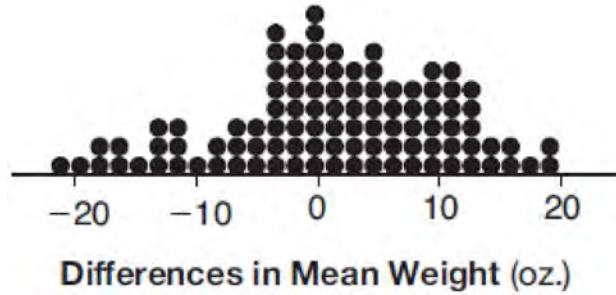
Group 1 (seconds)	Group 2 (seconds)
17.4	23.3
18.1	18.8
18.2	22.1
19.6	12.7
18.6	16.9
16.2	24.4
16.1	21.2
15.3	21.2
17.8	16.3
19.7	14.5
Mean = 17.7	Mean = 19.1

Ayva thinks drinking energy drinks makes students read faster. Using information from the experimental design or the results, explain why Ayva's hypothesis may be *incorrect*. Using the given results, Ayva randomly mixes the 20 reading times, splits them into two groups of 10, and simulates the difference of the means 232 times.



Ayva has decided that the difference in mean reading times is not an unusual occurrence. Support her decision using the results of the simulation. Explain your reasoning.

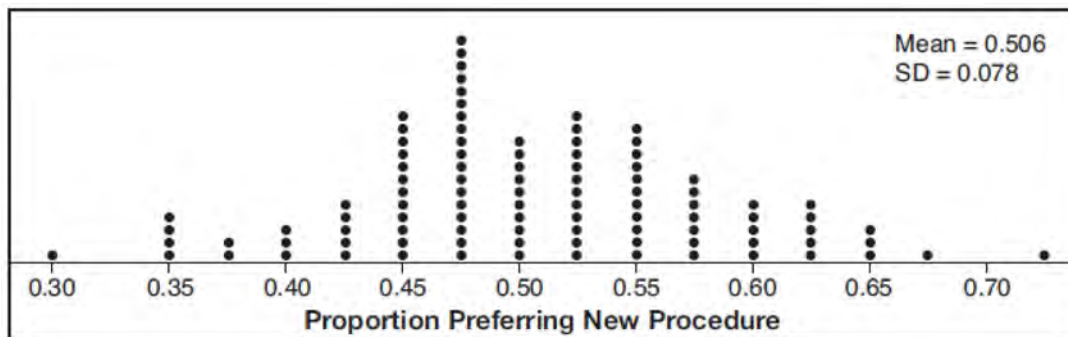
- 22 Gabriel performed an experiment to see if planting 13 tomato plants in black plastic mulch leads to larger tomatoes than if 13 plants are planted without mulch. He observed that the average weight of the tomatoes from tomato plants grown in black plastic mulch was 5 ounces greater than those from the plants planted without mulch. To determine if the observed difference is statistically significant, he rerandomized the tomato groups 100 times to study these random differences in the mean weights. The output of his simulation is summarized in the dotplot below.



Given these results, what is an appropriate inference that can be drawn?

- |   |   |
|---|---|
| <p>1 There was no effect observed between the two groups.</p> <p>2 There was an effect observed that could be due to the random assignment of plants to the groups.</p> | <p>3 There is strong evidence to support the hypothesis that tomatoes from plants planted in black plastic mulch are larger than those planted without mulch.</p> <p>4 There is strong evidence to support the hypothesis that tomatoes from plants planted without mulch are larger than those planted in black plastic mulch.</p> |
|---|---|

- 23 Charlie's Automotive Dealership is considering implementing a new check-in procedure for customers who are bringing their vehicles for routine maintenance. The dealership will launch the procedure if 50% or more of the customers give the new procedure a favorable rating when compared to the current procedure. The dealership devises a simulation based on the minimal requirement that 50% of the customers prefer the new procedure. Each dot on the graph below represents the proportion of the customers who preferred the new check-in procedure, each of sample size 40, simulated 100 times.

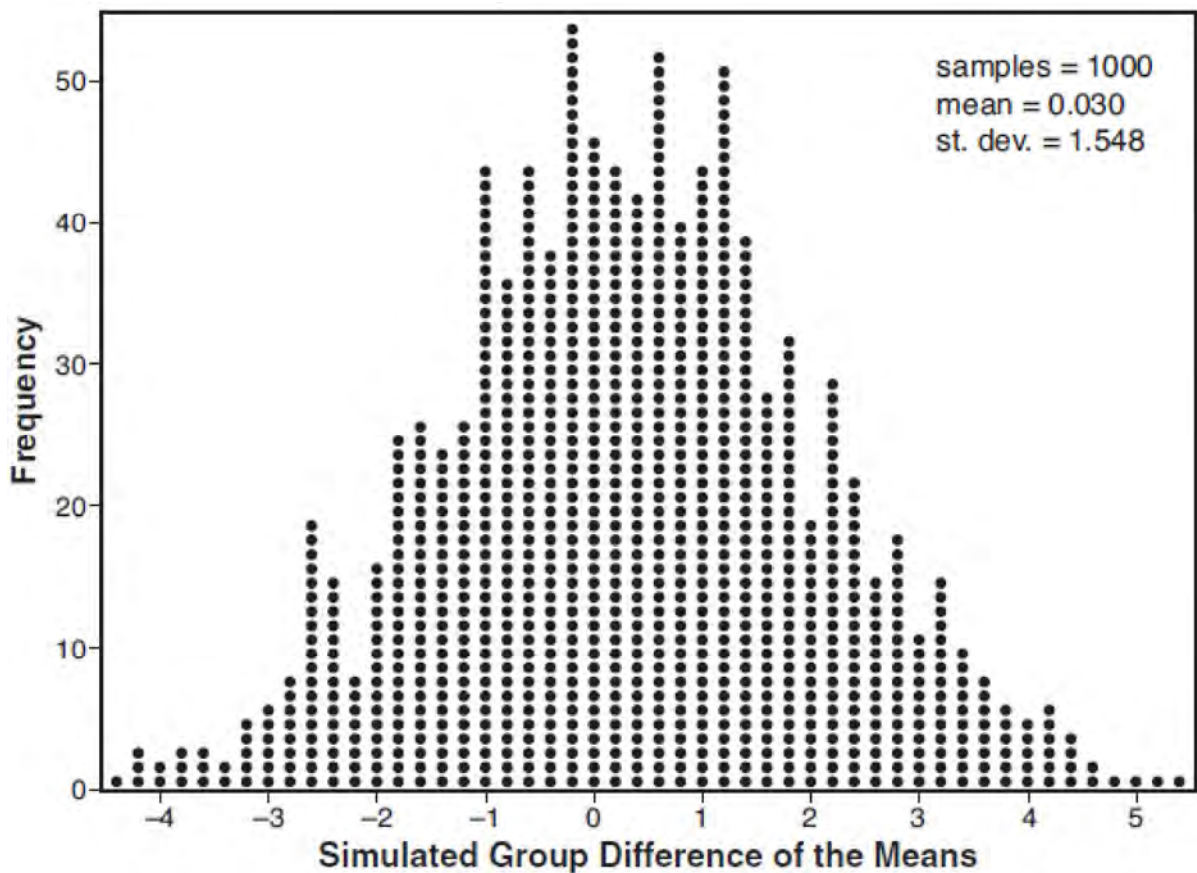


Assume the set of data is approximately normal and the dealership wants to be 95% confident of its results. Determine an interval containing the plausible sample values for which the dealership will launch the new procedure. Round your answer to the *nearest hundredth*. Forty customers are selected randomly to undergo the new check-in procedure and the proportion of customers who prefer the new procedure is 32.5%. The dealership decides *not* to implement the new check-in procedure based on the results of the study. Use statistical evidence to explain this decision.

- 24 Joseph was curious to determine if scent improves memory. A test was created where better memory is indicated by higher test scores. A controlled experiment was performed where one group was given the test on scented paper and the other group was given the test on unscented paper. The summary statistics from the experiment are given below.

	Scented Paper	Unscented Paper
$\bar{x}$	23	18
$s_x$	2.898	2.408

Calculate the difference in means in the experimental test grades (scented -unscented). A simulation was conducted in which the subjects' scores were rerandomized into two groups 1000 times. The differences of the group means were calculated each time. The results are shown below.

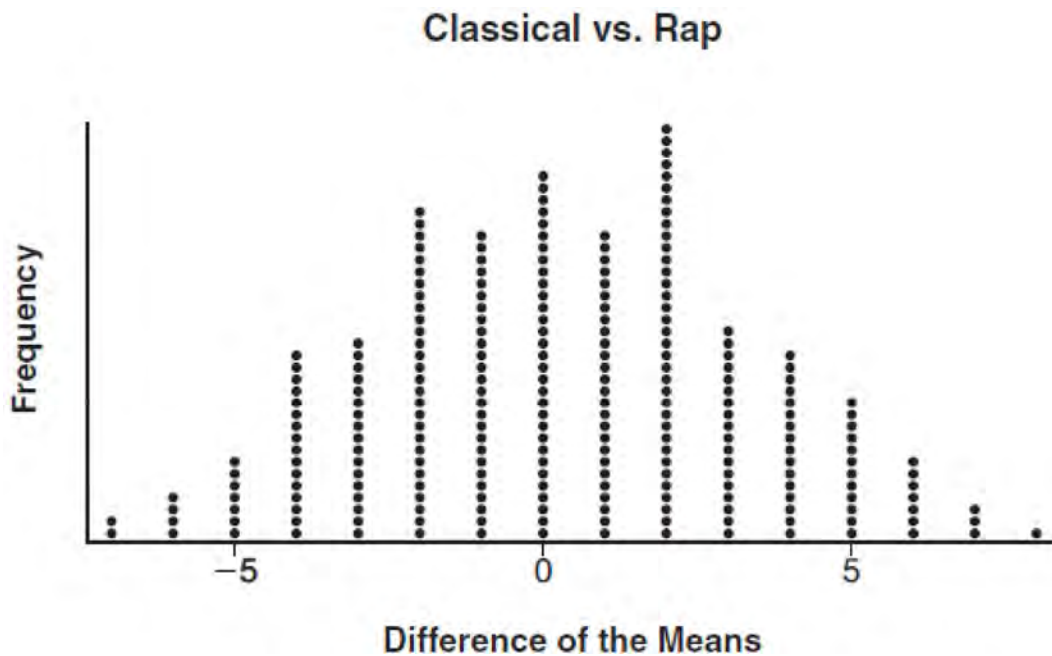


Use the simulation results to determine the interval representing the middle 95% of the difference in means, to the nearest hundredth. Is the difference in means in Joseph's experiment statistically significant based on the simulation? Explain.

- 25 To determine if the type of music played while taking a quiz has a relationship to results, 16 students were randomly assigned to either a room softly playing classical music or a room softly playing rap music. The results on the quiz were as follows:

Classical: 74, 83, 77, 77, 84, 82, 90, 89  
Rap: 77, 80, 78, 74, 69, 72, 78, 69

John correctly rounded the difference of the means of his experimental groups as 7. How did John obtain this value and what does it represent in the given context? Justify your answer. To determine if there is any significance in this value, John rerandomized the 16 scores into two groups of 8, calculated the difference of the means, and simulated this process 250 times as shown below.



Does the simulation support the theory that there may be a significant difference in quiz scores? Explain.

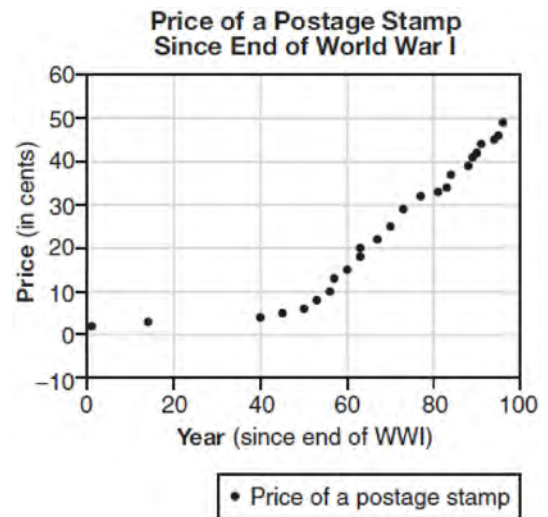


26 Elizabeth waited for 6 minutes at the drive thru at her favorite fast-food restaurant the last time she visited. She was upset about having to wait that long and notified the manager. The manager assured her that her experience was very unusual and that it would not happen again. A study of customers commissioned by this restaurant found an approximately normal distribution of results. The mean wait time was 226 seconds and the standard deviation was 38 seconds. Given these data, and using a 95% level of confidence, was Elizabeth's wait time unusual? Justify your answer.

- 27 A public opinion poll was conducted on behalf of Mayor Ortega's reelection campaign shortly before the election. 264 out of 550 likely voters said they would vote for Mayor Ortega; the rest said they would vote for his opponent. Which statement is *least* appropriate to make, according to the results of the poll?
- 1 There is a 48% chance that Mayor Ortega will win the election.
  - 2 The point estimate ( $\hat{p}$ ) of voters who will vote for Mayor Ortega is 48%.
  - 3 It is most likely that between 44% and 52% of voters will vote for Mayor Ortega.
  - 4 Due to the margin of error, an inference cannot be made regarding whether Mayor Ortega or his opponent is most likely to win the election.

S.ID.B.6: REGRESSION

- 28 The price of a postage stamp in the years since the end of World War I is shown in the scatterplot below.



The equation that best models the price, in cents, of a postage stamp based on these data is

- 1  $y = 0.59x - 14.82$
- 2  $y = 1.04(1.43)^x$
- 3  $y = 1.43(1.04)^x$
- 4  $y = 24 \sin(14x) + 25$

- 29 Using a microscope, a researcher observed and recorded the number of bacteria spores on a large sample of uniformly sized pieces of meat kept at room temperature. A summary of the data she recorded is shown in the table below.

Hours (x)	Average Number of Spores (y)
0	4
0.5	10
1	15
2	60
3	260
4	1130
6	16,380

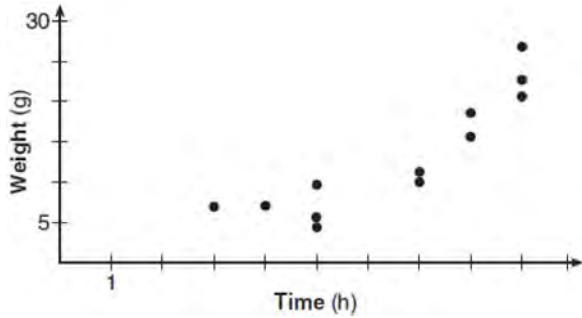
Using these data, write an exponential regression equation, rounding all values to the *nearest thousandth*. The researcher knows that people are likely to suffer from food-borne illness if the number of spores exceeds 100. Using the exponential regression equation, determine the maximum amount of time, to the *nearest quarter hour*, that the meat can be kept at room temperature safely.

- 30 A runner is using a nine-week training app to prepare for a "fun run." The table below represents the amount of the program completed,  $A$ , and the distance covered in a session,  $D$ , in miles.

<b>A</b>	$\frac{4}{9}$	$\frac{5}{9}$	$\frac{6}{9}$	$\frac{8}{9}$	1
<b>D</b>	2	2	2.25	3	3.25

Based on these data, write an exponential regression equation, rounded to the *nearest thousandth*, to model the distance the runner is able to complete in a session as she continues through the nine-week program.

- 31 A scatterplot showing the weight,  $w$ , in grams, of each crystal after growing  $t$  hours is shown below.



The relationship between weight,  $w$ , and time,  $t$ , is best modeled by

- 1  $w = 4^t + 5$
- 2  $w = (1.4)^t + 2$
- 3  $w = 5(2.1)^t$
- 4  $w = 8(.75)^t$

- 33 The heights of women in the United States are normally distributed with a mean of 64 inches and a standard deviation of 2.75 inches. The percent of women whose heights are between 64 and 69.5 inches, to the *nearest whole percent*, is

- 1 6
- 2 48
- 3 68
- 4 95

- 34 The lifespan of a 60-watt lightbulb produced by a company is normally distributed with a mean of 1450 hours and a standard deviation of 8.5 hours. If a 60-watt lightbulb produced by this company is selected at random, what is the probability that its lifespan will be between 1440 and 1465 hours?

- 1 0.3803
- 2 0.4612
- 3 0.8415
- 4 0.9612

S.ID.A.4: NORMAL DISTRIBUTIONS

- 32 Two versions of a standardized test are given, an April version and a May version. The statistics for the April version show a mean score of 480 and a standard deviation of 24. The statistics for the May version show a mean score of 510 and a standard deviation of 20. Assume the scores are normally distributed. Joanne took the April version and scored in the interval 510-540. What is the probability, to the *nearest ten thousandth*, that a test paper selected at random from the April version scored in the same interval? Maria took the May version. In what interval must Maria score to claim she scored as well as Joanne?

- 35 In 2013, approximately 1.6 million students took the Critical Reading portion of the SAT exam. The mean score, the modal score, and the standard deviation were calculated to be 496, 430, and 115, respectively. Which interval reflects 95% of the Critical Reading scores?

- 1  $430 \pm 115$
- 2  $430 \pm 230$
- 3  $496 \pm 115$
- 4  $496 \pm 230$

- 36 The weight of a bag of pears at the local market averages 8 pounds with a standard deviation of 0.5 pound. The weights of all the bags of pears at the market closely follow a normal distribution. Determine what percentage of bags, to the *nearest integer*, weighed *less* than 8.25 pounds.

37 The distribution of the diameters of ball bearings made under a given manufacturing process is normally distributed with a mean of 4 cm and a standard deviation of 0.2 cm. What proportion of the ball bearings will have a diameter less than 3.7 cm?

- 1 0.0668
- 2 0.4332
- 3 0.8664
- 4 0.9500

38 There are 440 students at Thomas Paine High School enrolled in U.S. History. On the April report card, the students' grades are approximately normally distributed with a mean of 79 and a standard deviation of 7. Students who earn a grade less than or equal to 64.9 must attend summer school. The number of students who must attend summer school for U.S. History is closest to

- 1 3
- 2 5
- 3 10
- 4 22

39 The weights of bags of Graseck's Chocolate Candies are normally distributed with a mean of 4.3 ounces and a standard deviation of 0.05 ounces. What is the probability that a bag of these chocolate candies weighs less than 4.27 ounces?

- 1 0.2257
- 2 0.2743
- 3 0.7257
- 4 0.7757

40 The scores of a recent test taken by 1200 students had an approximately normal distribution with a mean of 225 and a standard deviation of 18. Determine the number of students who scored between 200 and 245.

## PROBABILITY

### S.CP.B.7: THEORETICAL PROBABILITY

41 A suburban high school has a population of 1376 students. The number of students who participate in sports is 649. The number of students who participate in music is 433. If the probability that a student participates in either sports or music is  $\frac{974}{1376}$ , what is the probability that a student participates in both sports and music?

42 The probability that Gary and Jane have a child with blue eyes is 0.25, and the probability that they have a child with blond hair is 0.5. The probability that they have a child with both blue eyes and blond hair is 0.125. Given this information, the events blue eyes and blond hair are

- I: dependent
- II: independent
- III: mutually exclusive

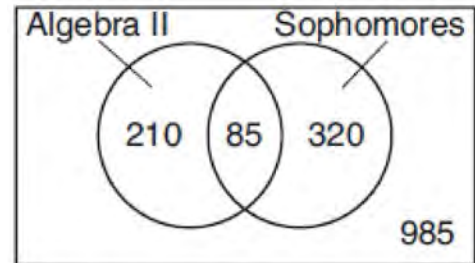
- 1 I, only
- 2 II, only
- 3 I and III
- 4 II and III

S.CP.A.2: PROBABILITY OF COMPOUND  
EVENTS

- 43 In contract negotiations between a local government agency and its workers, it is estimated that there is a 50% chance that an agreement will be reached on the salaries of the workers. It is estimated that there is a 70% chance that there will be an agreement on the insurance benefits. There is a 20% chance that no agreement will be reached on either issue. Find the probability that an agreement will be reached on *both* issues. Based on this answer, determine whether the agreement on salaries and the agreement on insurance are independent events. Justify your answer.
- 44 Given events  $A$  and  $B$ , such that  $P(A) = 0.6$ ,  $P(B) = 0.5$ , and  $P(A \cup B) = 0.8$ , determine whether  $A$  and  $B$  are independent or dependent.
- 45 On a given school day, the probability that Nick oversleeps is 48% and the probability he has a pop quiz is 25%. Assuming these two events are independent, what is the probability that Nick oversleeps and has a pop quiz on the same day?
- 1 73%
  - 2 36%
  - 3 23%
  - 4 12%

S.CP.A.1: VENN DIAGRAMS

- 46 Data for the students enrolled in a local high school are shown in the Venn diagram below.



If a student from the high school is selected at random, what is the probability that the student is a sophomore given that the student is enrolled in Algebra II?

- 1  $\frac{85}{210}$
- 2  $\frac{85}{295}$
- 3  $\frac{85}{405}$
- 4  $\frac{85}{1600}$

S.CP.A.3-4, S.CP.B.6: CONDITIONAL  
PROBABILITY

- 47 Sean's team has a baseball game tomorrow. He pitches 50% of the games. There is a 40% chance of rain during the game tomorrow. If the probability that it rains given that Sean pitches is 40%, it can be concluded that these two events are
- 1 independent
  - 2 dependent
  - 3 mutually exclusive
  - 4 complements

48 A student is chosen at random from the student body at a given high school. The probability that the student selects Math as the favorite subject is  $\frac{1}{4}$ . The probability that the student chosen is a junior is  $\frac{116}{459}$ . If the probability that the student selected is a junior or that the student chooses Math as the favorite subject is  $\frac{47}{108}$ , what is the exact probability that the student selected is a junior whose favorite subject is Math? Are the events "the student is a junior" and "the student's favorite subject is Math" independent of each other? Explain your answer.

49 A fast-food restaurant analyzes data to better serve its customers. After its analysis, it discovers that the events  $D$ , that a customer uses the drive-thru, and  $F$ , that a customer orders French fries, are independent. The following data are given in a report:

$$P(F) = 0.8$$

$$P(F \cap D) = 0.456$$

Given this information,  $P(F|D)$  is

- 1 0.344
- 2 0.3648
- 3 0.57
- 4 0.8

50 The results of a poll of 200 students are shown in the table below:

	Preferred Music Style		
	Techno	Rap	Country
Female	54	25	27
Male	36	40	18

For this group of students, do these data suggest that gender and preferred music styles are independent of each other? Justify your answer.

51 The results of a survey of the student body at Central High School about television viewing preferences are shown below.

	Comedy Series	Drama Series	Reality Series	Total
Males	95	65	70	230
Females	80	70	110	260
Total	175	135	180	490

Are the events "student is a male" and "student prefers reality series" independent of each other? Justify your answer.



- 55 The guidance department has reported that of the senior class, 2.3% are members of key club,  $K$ , 8.6% are enrolled in AP Physics,  $P$ , and 1.9% are in both. Determine the probability of  $P$  given  $K$ , to the *nearest tenth of a percent*. The principal would like a basic interpretation of these results. Write a statement relating your calculated probabilities to student enrollment in the given situation.
- 56 A study was designed to test the effectiveness of a new drug. Half of the volunteers received the drug. The other half received a sugar pill. The probability of a volunteer receiving the drug and getting well was 40%. What is the probability of a volunteer getting well, given that the volunteer received the drug?

## RATE

### F.IF.B.6: RATE OF CHANGE

- 57 The distance needed to stop a car after applying the brakes varies directly with the square of the car's speed. The table below shows stopping distances for various speeds.

<b>Speed (mph)</b>	10	20	30	40	50	60	70
<b>Distance (ft)</b>	6.25	25	56.25	100	156.25	225	306.25

Determine the average rate of change in braking distance, in ft/mph, between one car traveling at 50 mph and one traveling at 70 mph. Explain what this rate of change means as it relates to braking distance.

- 58 Joelle has a credit card that has a 19.2% annual interest rate compounded monthly. She owes a total balance of  $B$  dollars after  $m$  months. Assuming she makes no payments on her account, the table below illustrates the balance she owes after  $m$  months.

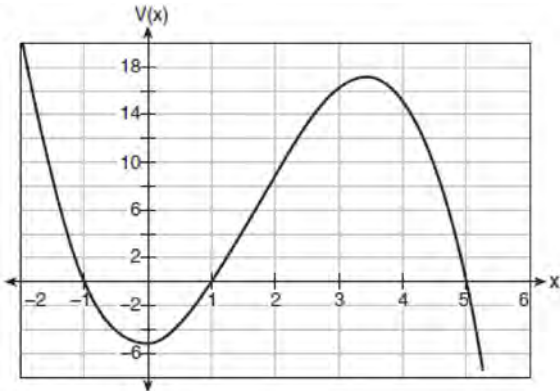
<b>m</b>	<b>B</b>
0	100.00
10	1172.00
19	1352.00
36	1770.80
60	2591.90
69	2990.00
72	3135.80
73	3186.00

Over which interval of time is her average rate of change for the balance on her credit card account the greatest?

- |   |                      |   |                      |
|---|----------------------|---|----------------------|
| 1 | month 10 to month 60 | 3 | month 36 to month 72 |
| 2 | month 19 to month 69 | 4 | month 60 to month 73 |



- 59 A cardboard box manufacturing company is building boxes with length represented by  $x + 1$ , width by  $5 - x$ , and height by  $x - 1$ . The volume of the box is modeled by the function below.



Over which interval is the volume of the box changing at the fastest average rate?

- 1 [1, 2]
  - 2 [1, 3.5]
  - 3 [1, 5]
  - 4 [0, 3.5]
- 60 The function  $f(x) = 2^{-0.25x} \cdot \sin\left(\frac{\pi}{2}x\right)$  represents a damped sound wave function. What is the average rate of change for this function on the interval  $[-7, 7]$ , to the *nearest hundredth*?
- 1 -3.66
  - 2 -0.30
  - 3 -0.26
  - 4 3.36

- 61 The value of a new car depreciates over time. Greg purchased a new car in June 2011. The value,  $V$ , of his car after  $t$  years can be modeled by the equation  $\log_{0.8}\left(\frac{V}{17000}\right) = t$ . What is the average decreasing rate of change per year of the value of the car from June 2012 to June 2014, to the *nearest ten dollars per year*?

- 1 1960
  - 2 2180
  - 3 2450
  - 4 2770
- 62 The function  $N(t) = 100e^{-0.023t}$  models the number of grams in a sample of cesium-137 that remain after  $t$  years. On which interval is the sample's average rate of decay the fastest?
- 1 [1, 10]
  - 2 [10, 20]
  - 3 [15, 25]
  - 4 [1, 30]

- 63 The world population was 2560 million people in 1950 and 3040 million in 1960 and can be modeled by the function  $p(t) = 2560e^{0.017185t}$ , where  $t$  is time in years after 1950 and  $p(t)$  is the population in millions. Determine the average rate of change of  $p(t)$  in millions of people per year, from  $4 \leq t \leq 8$ . Round your answer to the *nearest hundredth*.

## QUADRATICS

### A.REI.B.4: SOLVING QUADRATICS

- 64 The solutions to the equation  $-\frac{1}{2}x^2 = -6x + 20$  are
- $-6 \pm 2i$
  - $-6 \pm 2\sqrt{19}$
  - $6 \pm 2i$
  - $6 \pm 2\sqrt{19}$
- 65 A solution of the equation  $2x^2 + 3x + 2 = 0$  is
- $-\frac{3}{4} + \frac{1}{4}i\sqrt{7}$
  - $-\frac{3}{4} + \frac{1}{4}i$
  - $-\frac{3}{4} + \frac{1}{4}\sqrt{7}$
  - $\frac{1}{2}$
- 66 The solution to the equation  $18x^2 - 24x + 87 = 0$  is
- $-\frac{2}{3} \pm 6i\sqrt{158}$
  - $-\frac{2}{3} \pm \frac{1}{6}i\sqrt{158}$
  - $\frac{2}{3} \pm 6i\sqrt{158}$
  - $\frac{2}{3} \pm \frac{1}{6}i\sqrt{158}$
- 67 The roots of the equation  $x^2 + 2x + 5 = 0$  are
- $-3$  and  $1$
  - $-1$ , only
  - $-1 + 2i$  and  $-1 - 2i$
  - $-1 + 4i$  and  $-1 - 4i$
- 68 The solution to the equation  $4x^2 + 98 = 0$  is
- $\pm 7$
  - $\pm 7i$
  - $\pm \frac{7\sqrt{2}}{2}$
  - $\pm \frac{7i\sqrt{2}}{2}$
- 69 Solve the equation  $2x^2 + 5x + 8 = 0$ . Express the answer in  $a + bi$  form.
- 70 The roots of the equation  $3x^2 + 2x = -7$  are
- $-2, -\frac{1}{3}$
  - $-\frac{7}{3}, 1$
  - $-\frac{1}{3} \pm \frac{2i\sqrt{5}}{3}$
  - $-\frac{1}{3} \pm \frac{\sqrt{11}}{3}$

### A.REI.B.4: COMPLEX CONJUGATE ROOT THEOREM

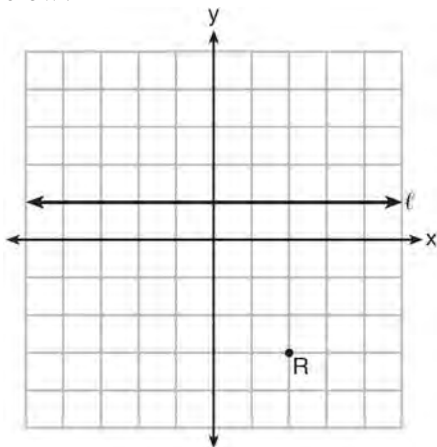
- 71 Which equation has  $1 - i$  as a solution?
- $x^2 + 2x - 2 = 0$
  - $x^2 + 2x + 2 = 0$
  - $x^2 - 2x - 2 = 0$
  - $x^2 - 2x + 2 = 0$

G.GPE.A.2: GRAPHING QUADRATIC FUNCTIONS

72 Which equation represents a parabola with a focus of  $(0,4)$  and a directrix of  $y = 2$ ?

- 1  $y = x^2 + 3$
- 2  $y = -x^2 + 1$
- 3  $y = \frac{x^2}{2} + 3$
- 4  $y = \frac{x^2}{4} + 3$

73 Which equation represents the set of points equidistant from line  $\ell$  and point  $R$  shown on the graph below?



- 1  $y = -\frac{1}{8}(x+2)^2 + 1$
- 2  $y = -\frac{1}{8}(x+2)^2 - 1$
- 3  $y = -\frac{1}{8}(x-2)^2 + 1$
- 4  $y = -\frac{1}{8}(x-2)^2 - 1$

74 The directrix of the parabola  $12(y+3) = (x-4)^2$  has the equation  $y = -6$ . Find the coordinates of the focus of the parabola.

75 A parabola has its focus at  $(1,2)$  and its directrix is  $y = -2$ . The equation of this parabola could be

- 1  $y = 8(x+1)^2$
- 2  $y = \frac{1}{8}(x+1)^2$
- 3  $y = 8(x-1)^2$
- 4  $y = \frac{1}{8}(x-1)^2$

76 Which equation represents a parabola with the focus at  $(0,-1)$  and the directrix of  $y = 1$ ?

- 1  $x^2 = -8y$
- 2  $x^2 = -4y$
- 3  $x^2 = 8y$
- 4  $x^2 = 4y$

77 What is the equation of the directrix for the parabola  $-8(y-3) = (x+4)^2$ ?

- 1  $y = 5$
- 2  $y = 1$
- 3  $y = -2$
- 4  $y = -6$

- 78 Which equation represents a parabola with a focus of  $(-2,5)$  and a directrix of  $y = 9$ ?

- 1  $(y - 7)^2 = 8(x + 2)$
- 2  $(y - 7)^2 = -8(x + 2)$
- 3  $(x + 2)^2 = 8(y - 7)$
- 4  $(x + 2)^2 = -8(y - 7)$

- 79 The parabola described by the equation  $y = \frac{1}{12}(x - 2)^2 + 2$  has the directrix at  $y = -1$ . The focus of the parabola is

- 1  $(2, -1)$
- 2  $(2, 2)$
- 3  $(2, 3)$
- 4  $(2, 5)$

- 82 Solve the following system of equations algebraically for all values of  $x$ ,  $y$ , and  $z$ :

$$\begin{aligned}x + y + z &= 1 \\2x + 4y + 6z &= 2 \\-x + 3y - 5z &= 11\end{aligned}$$

- 83 For the system shown below, what is the value of  $z$ ?

$$\begin{aligned}y &= -2x + 14 \\3x - 4z &= 2 \\3x - y &= 16\end{aligned}$$

- 1 5
- 2 2
- 3 6
- 4 4

## SYSTEMS

### A.REI.C.6: SOLVING LINEAR SYSTEMS

- 80 Solve the following system of equations algebraically for all values of  $x$ ,  $y$ , and  $z$ :

$$\begin{aligned}x + 3y + 5z &= 45 \\6x - 3y + 2z &= -10 \\-2x + 3y + 8z &= 72\end{aligned}$$

- 81 Which value is *not* contained in the solution of the system shown below?

$$\begin{aligned}a + 5b - c &= -20 \\4a - 5b + 4c &= 19 \\-a - 5b - 5c &= 2\end{aligned}$$

- 1  $-2$
- 2  $2$
- 3  $3$
- 4  $-3$

- 84 Solve the following system of equations algebraically for all values of  $x$ ,  $y$ , and  $z$ :

$$\begin{aligned}2x + 3y - 4z &= -1 \\x - 2y + 5z &= 3 \\-4x + y + z &= 16\end{aligned}$$

### A.REI.C.7, A.REI.D.11: QUADRATIC-LINEAR SYSTEMS

- 85 Algebraically determine the values of  $x$  that satisfy the system of equations below.

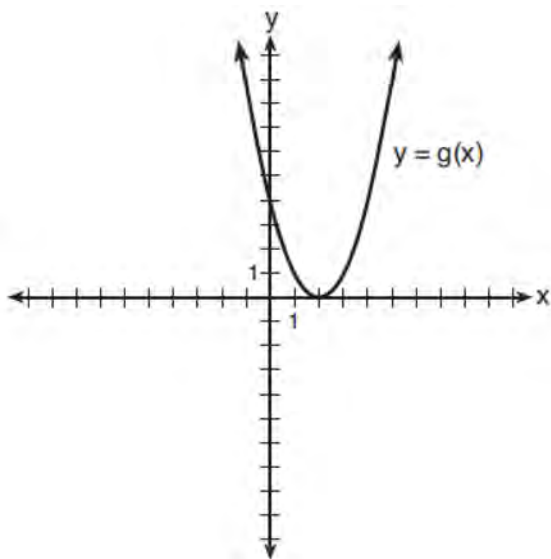
$$\begin{aligned}y &= -2x + 1 \\y &= -2x^2 + 3x + 1\end{aligned}$$

- 86 Solve the system of equations shown below algebraically.

$$(x - 3)^2 + (y + 2)^2 = 16$$

$$2x + 2y = 10$$

- 87 What is the solution to the system of equations  $y = 3x - 2$  and  $y = g(x)$  where  $g(x)$  is defined by the function below?



- 1  $\{(0, -2)\}$
- 2  $\{(0, -2), (1, 6)\}$
- 3  $\{(1, 6)\}$
- 4  $\{(1, 1), (6, 16)\}$

- 88 Consider the system shown below.

$$2x - y = 4$$

$$(x + 3)^2 + y^2 = 8$$

The two solutions of the system can be described as

- 1 both imaginary
- 2 both irrational
- 3 both rational
- 4 one rational and one irrational

- 89 The graphs of the equations  $y = x^2 + 4x - 1$  and  $y + 3 = x$  are drawn on the same set of axes. One solution of this system is

- 1  $(-5, -2)$
- 2  $(-1, -4)$
- 3  $(1, 4)$
- 4  $(-2, -1)$

- 90 Solve the following system of equations algebraically.  $x^2 + y^2 = 400$

$$y = x - 28$$

- 91 Sally's high school is planning their spring musical. The revenue,  $R$ , generated can be determined by the function  $R(t) = -33t^2 + 360t$ , where  $t$  represents the price of a ticket. The production cost,  $C$ , of the musical is represented by the function  $C(t) = 700 + 5t$ . What is the highest ticket price, to the *nearest dollar*, they can charge in order to *not* lose money on the event?

- 1  $t = 3$
- 2  $t = 5$
- 3  $t = 8$
- 4  $t = 11$

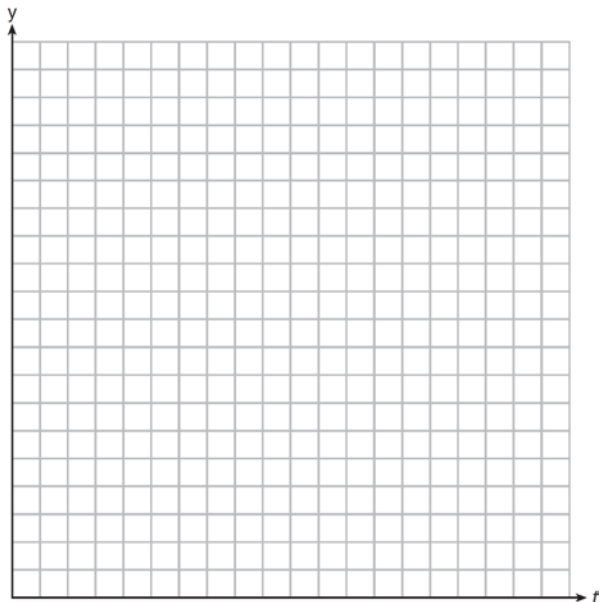
A.REI.D.11: OTHER SYSTEMS

- 92 Given:  $h(x) = \frac{2}{9}x^3 + \frac{8}{9}x^2 - \frac{16}{13}x + 2$

$$k(x) = -|0.7x| + 5$$

State the solutions to the equation  $h(x) = k(x)$ , rounded to the *nearest hundredth*.

- 93 Drugs break down in the human body at different rates and therefore must be prescribed by doctors carefully to prevent complications, such as overdosing. The breakdown of a drug is represented by the function  $N(t) = N_0(e)^{-rt}$ , where  $N(t)$  is the amount left in the body,  $N_0$  is the initial dosage,  $r$  is the decay rate, and  $t$  is time in hours. Patient A,  $A(t)$ , is given 800 milligrams of a drug with a decay rate of 0.347. Patient B,  $B(t)$ , is given 400 milligrams of another drug with a decay rate of 0.231. Write two functions,  $A(t)$  and  $B(t)$ , to represent the breakdown of the respective drug given to each patient. Graph each function on the set of axes below.



To the *nearest hour*,  $t$ , when does the amount of the given drug remaining in patient B begin to exceed the amount of the given drug remaining in patient A? The doctor will allow patient A to take another 800 milligram dose of the drug once only 15% of the original dose is left in the body. Determine, to the *nearest tenth of an hour*, how long patient A will have to wait to take another 800 milligram dose of the drug.

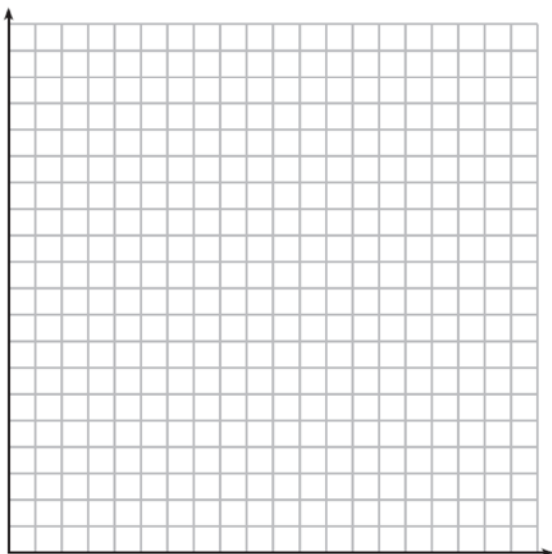
- 94 Which value, to the *nearest tenth*, is *not* a solution of  $p(x) = q(x)$  if  $p(x) = x^3 + 3x^2 - 3x - 1$  and  $q(x) = 3x + 8$ ?
- 1 -3.9
  - 2 -1.1
  - 3 2.1
  - 4 4.7
- 95 To the *nearest tenth*, the value of  $x$  that satisfies  $2^x = -2x + 11$  is
- 1 2.5
  - 2 2.6
  - 3 5.8
  - 4 5.9

- 96 When  $g(x) = \frac{2}{x+2}$  and  $h(x) = \log(x+1) + 3$  are graphed on the same set of axes, which coordinates best approximate their point of intersection?
- 1 (-0.9, 1.8)
  - 2 (-0.9, 1.9)
  - 3 (1.4, 3.3)
  - 4 (1.4, 3.4)

- 97 Pedro and Bobby each own an ant farm. Pedro starts with 100 ants and says his farm is growing exponentially at a rate of 15% per month. Bobby starts with 350 ants and says his farm is steadily decreasing by 5 ants per month. Assuming both boys are accurate in describing the population of their ant farms, after how many months will they both have approximately the same number of ants?
- 1 7
  - 2 8
  - 3 13
  - 4 36

- 98 The value of a certain small passenger car based on its use in years is modeled by

$V(t) = 28482.698(0.684)^t$ , where  $V(t)$  is the value in dollars and  $t$  is the time in years. Zach had to take out a loan to purchase the small passenger car. The function  $Z(t) = 22151.327(0.778)^t$ , where  $Z(t)$  is measured in dollars, and  $t$  is the time in years, models the unpaid amount of Zach's loan over time. Graph  $V(t)$  and  $Z(t)$  over the interval  $0 \leq t \leq 5$ , on the set of axes below.



State when  $V(t) = Z(t)$ , to the *nearest hundredth*, and interpret its meaning in the context of the problem. Zach takes out an insurance policy that requires him to pay a \$3000 deductible in case of a collision. Zach will cancel the collision policy when the value of his car equals his deductible. To the *nearest year*, how long will it take Zach to cancel this policy? Justify your answer.

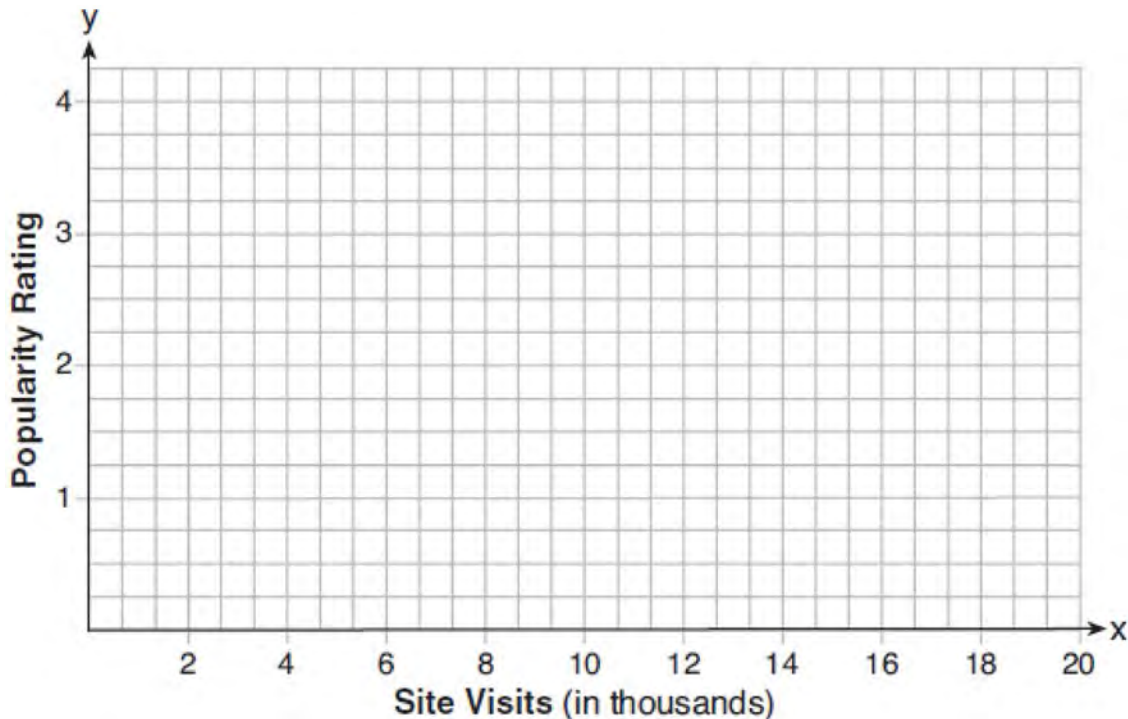
- 99 If  $f(x) = 3|x| - 1$  and  $g(x) = 0.03x^3 - x + 1$ , an approximate solution for the equation  $f(x) = g(x)$  is
- 1 1.96
  - 2 11.29
  - 3  $(-0.99, 1.96)$
  - 4  $(11.29, 32.87)$

- 100 For which values of  $x$ , rounded to the *nearest hundredth*, will  $|x^2 - 9| - 3 = \log_3 x$ ?
- 1 2.29 and 3.63
  - 2 2.37 and 3.54
  - 3 2.84 and 3.17
  - 4 2.92 and 3.06

- 101 Researchers in a local area found that the population of rabbits with an initial population of 20 grew continuously at the rate of 5% per month. The fox population had an initial value of 30 and grew continuously at the rate of 3% per month. Find, to the *nearest tenth of a month*, how long it takes for these populations to be equal.

- 102 If  $p(x) = 2 \ln(x) - 1$  and  $m(x) = \ln(x + 6)$ , then what is the solution for  $p(x) = m(x)$ ?
- 1 1.65
  - 2 3.14
  - 3 5.62
  - 4 no solution

- 103 Website popularity ratings are often determined using models that incorporate the number of visits per week a website receives. One model for ranking websites is  $P(x) = \log(x - 4)$ , where  $x$  is the number of visits per week in thousands and  $P(x)$  is the website's popularity rating. According to this model, if a website is visited 16,000 times in one week, what is its popularity rating, rounded to the *nearest tenth*? Graph  $y = P(x)$  on the axes below.



An alternative rating model is represented by  $R(x) = \frac{1}{2}x - 6$ , where  $x$  is the number of visits per week in thousands. Graph  $R(x)$  on the same set of axes. For what number of weekly visits will the two models provide the same rating?





- 108 Iridium-192 is an isotope of iridium and has a half-life of 73.83 days. If a laboratory experiment begins with 100 grams of Iridium-192, the number of grams,  $A$ , of Iridium-192 present after  $t$  days

would be  $A = 100\left(\frac{1}{2}\right)^{\frac{t}{73.83}}$ . Which equation

approximates the amount of Iridium-192 present after  $t$  days?

1  $A = 100\left(\frac{73.83}{2}\right)^t$

2  $A = 100\left(\frac{1}{147.66}\right)^t$

3  $A = 100(0.990656)^t$

4  $A = 100(0.116381)^t$

- 109 For a given time,  $x$ , in seconds, an electric current,  $y$ , can be represented by  $y = 2.5(1 - 2.7^{-.10x})$ .

Which equation is *not* equivalent?

1  $y = 2.5 - 2.5(2.7^{-.10x})$

2  $y = 2.5 - 2.5\left((2.7^2)^{-.05x}\right)$

3  $y = 2.5 - 2.5\left(\frac{1}{2.7^{.10x}}\right)$

4  $y = 2.5 - 2.5(2.7^{-2})(2.7^{.05x})$

- 110 On average, college seniors graduating in 2012 could compute their growing student loan debt using the function  $D(t) = 29,400(1.068)^t$ , where  $t$  is time in years. Which expression is equivalent to  $29,400(1.068)^t$  and could be used by students to identify an approximate daily interest rate on their loans?

1  $29,400\left(1.068^{\frac{1}{365}}\right)^t$

2  $29,400\left(\frac{1.068}{365}\right)^{365t}$

3  $29,400\left(1 + \frac{0.068}{365}\right)^t$

4  $29,400\left(1.068^{\frac{1}{365}}\right)^{365t}$

- 111 Stephanie found that the number of white-winged cross bills in an area can be represented by the formula  $C = 550(1.08)^t$ , where  $t$  represents the number of years since 2010. Which equation correctly represents the number of white-winged cross bills in terms of the monthly rate of population growth?

1  $C = 550(1.00643)^t$

2  $C = 550(1.00643)^{12t}$

3  $C = 550(1.00643)^{\frac{t}{12}}$

4  $C = 550(1.00643)^{t+12}$

- 112 Last year, the total revenue for Home Style, a national restaurant chain, increased 5.25% over the previous year. If this trend were to continue, which expression could the company's chief financial officer use to approximate their monthly percent increase in revenue? [Let  $m$  represent months.]
- 1  $(1.0525)^m$
  - 2  $(1.0525)^{\frac{12}{m}}$
  - 3  $(1.00427)^m$
  - 4  $(1.00427)^{\frac{m}{12}}$
- 113 A payday loan company makes loans between \$100 and \$1000 available to customers. Every 14 days, customers are charged 30% interest with compounding. In 2013, Remi took out a \$300 payday loan. Which expression can be used to calculate the amount she would owe, in dollars, after one year if she did not make payments?
- 1  $300(.30)^{\frac{14}{365}}$
  - 2  $300(1.30)^{\frac{14}{365}}$
  - 3  $300(.30)^{\frac{365}{14}}$
  - 4  $300(1.30)^{\frac{365}{14}}$
- 114 According to a pricing website, Indroid phones lose 58% of their cash value over 1.5 years. Which expression can be used to estimate the value of a \$300 Indroid phone in 1.5 years?
- 1  $300e^{-0.87}$
  - 2  $300e^{-0.63}$
  - 3  $300e^{-0.58}$
  - 4  $300e^{-0.42}$
- 115 Titanium-44 is a radioactive isotope such that every 63 years, its mass decreases by half. For a sample of titanium-44 with an initial mass of 100 grams, write a function that will give the mass of the sample remaining after any amount of time. Define all variables. Scientists sometimes use the average yearly decrease in mass for estimation purposes. Use the average yearly decrease in mass of the sample between year 0 and year 10 to predict the amount of the sample remaining after 40 years. Round your answer to the *nearest tenth*. Is the actual mass of the sample or the estimated mass greater after 40 years? Justify your answer.
- 116 A rabbit population doubles every 4 weeks. There are currently five rabbits in a restricted area. If  $t$  represents the time, in weeks, and  $P(t)$  is the population of rabbits with respect to time, about how many rabbits will there be in 98 days?
- 1 56
  - 2 152
  - 3 3688
  - 4 81,920
- 117 An equation to represent the value of a car after  $t$  months of ownership is  $v = 32,000(0.81)^{\frac{t}{12}}$ . Which statement is *not* correct?
- 1 The car lost approximately 19% of its value each month.
  - 2 The car maintained approximately 98% of its value each month.
  - 3 The value of the car when it was purchased was \$32,000.
  - 4 The value of the car 1 year after it was purchased was \$25,920.

118 The function  $p(t) = 110e^{0.03922t}$  models the population of a city, in millions,  $t$  years after 2010. As of today, consider the following two statements:

- I. The current population is 110 million.
- II. The population increases continuously by approximately 3.9% per year.

This model supports

- 1 I, only
- 2 II, only
- 3 both I and II
- 4 neither I nor II

119 A certain pain reliever is taken in 220 mg dosages and has a half-life of 12 hours. The function

$$A = 220 \left( \frac{1}{2} \right)^{\frac{t}{12}}$$

can be used to model this situation,

where  $A$  is the amount of pain reliever in milligrams remaining in the body after  $t$  hours.

According to this function, which statement is true?

- 1 Every hour, the amount of pain reliever remaining is cut in half.
- 2 In 12 hours, there is no pain reliever remaining in the body.
- 3 In 24 hours, there is no pain reliever remaining in the body.
- 4 In 12 hours, 110 mg of pain reliever is remaining.

F.IF.B.4: EVALUATING LOGARITHMIC EXPRESSIONS

120 The loudness of sound is measured in units called decibels (dB). These units are measured by first assigning an intensity  $I_0$  to a very soft sound that is called the threshold sound. The sound to be measured is assigned an intensity,  $I$ , and the decibel rating,  $d$ , of this sound is found using  $d = 10 \log \frac{I}{I_0}$ . The threshold sound audible to the average person is  $1.0 \times 10^{-12}$  W/m<sup>2</sup> (watts per square meter). Consider the following sound level classifications:

Moderate	45-69 dB
Loud	70-89 dB
Very loud	90-109 dB
Deafening	>110 dB

How would a sound with intensity  $6.3 \times 10^{-3}$  W/m<sup>2</sup> be classified?

- 1 moderate
- 2 loud
- 3 very loud
- 4 deafening

F.IF.C.7: GRAPHING EXPONENTIAL FUNCTIONS

121 Which function represents exponential decay?

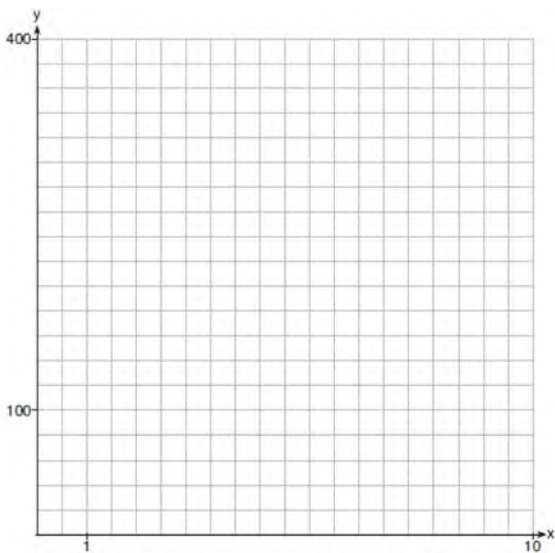
- 1  $y = 2^{0.3t}$
- 2  $y = 1.2^{3t}$
- 3  $y = \left(\frac{1}{2}\right)^{-t}$
- 4  $y = 5^{-t}$

122 The function  $M(t)$  represents the mass of radium over time,  $t$ , in years.

$$M(t) = 100e^{\frac{\left(\ln \frac{1}{2}\right)t}{1590}}$$

Determine if the function  $M(t)$  represents growth or decay. Explain your reasoning.

123 Graph  $y = 400(.85)^{2x} - 6$  on the set of axes below.



124 If the function  $g(x) = ab^x$  represents exponential growth, which statement about  $g(x)$  is *false*?

- 1  $a > 0$  and  $b > 1$
- 2 The  $y$ -intercept is  $(0, a)$ .
- 3 The asymptote is  $y = 0$ .
- 4 The  $x$ -intercept is  $(b, 0)$ .

125 Which statement is true about the graph of

$$f(x) = \left(\frac{1}{8}\right)^x ?$$

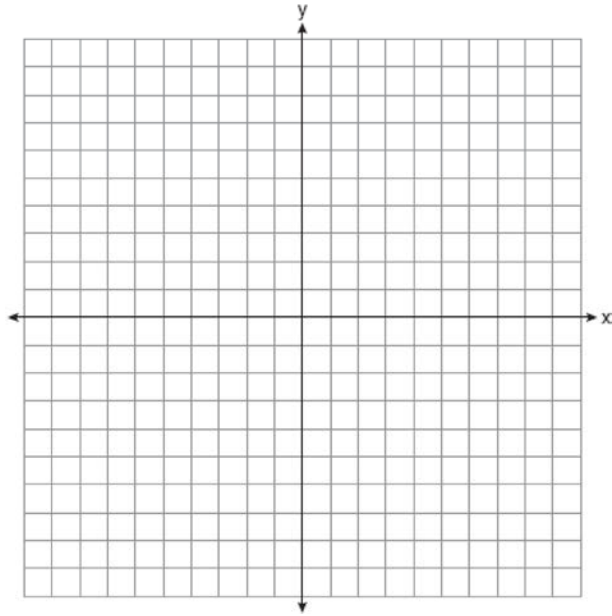
- 1 The graph is always increasing.
- 2 The graph is always decreasing.
- 3 The graph passes through  $(1, 0)$ .
- 4 The graph has an asymptote,  $x = 0$ .

F.IF.C.7: GRAPHING LOGARITHMIC FUNCTIONS

126 Which statement about the graph of  $c(x) = \log_6 x$  is *false*?

- 1 The asymptote has equation  $y = 0$ .
- 2 The graph has no  $y$ -intercept.
- 3 The domain is the set of positive reals.
- 4 The range is the set of all real numbers.

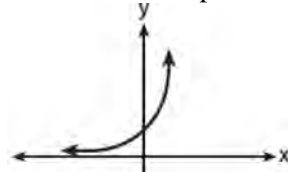
- 127 Graph  $y = \log_2(x + 3) - 5$  on the set of axes below.  
 Use an appropriate scale to include *both* intercepts.



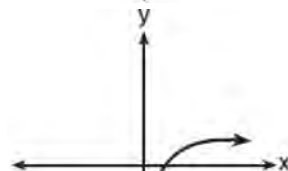
Describe the behavior of the given function as  $x$  approaches  $-3$  and as  $x$  approaches positive infinity.

- 128 The graph of  $y = \log_2 x$  is translated to the right 1 unit and down 1 unit. The coordinates of the  $x$ -intercept of the translated graph are
- 1 (0,0)
  - 2 (1,0)
  - 3 (2,0)
  - 4 (3,0)

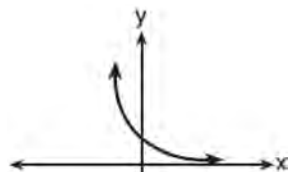
- 129 Which sketch best represents the graph of  $x = 3^y$ ?



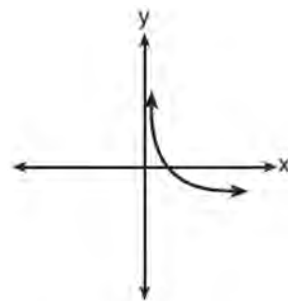
1



2



3



4

A.CED.A.1, F.LE.A.4: EXPONENTIAL EQUATIONS, EXPONENTIAL GROWTH, EXPONENTIAL DECAY

- 130 Monthly mortgage payments can be found using the formula below:

$$M = \frac{P \left( \frac{r}{12} \right) \left( 1 + \frac{r}{12} \right)^n}{\left( 1 + \frac{r}{12} \right)^n - 1}$$

$M$  = monthly payment  
 $P$  = amount borrowed  
 $r$  = annual interest rate  
 $n$  = number of monthly payments

The Banks family would like to borrow \$120,000 to purchase a home. They qualified for an annual interest rate of 4.8%. Algebraically determine the *fewest* number of whole years the Banks family would need to include in the mortgage agreement in order to have a monthly payment of no more than \$720.

- 131 Seth's parents gave him \$5000 to invest for his 16th birthday. He is considering two investment options. Option A will pay him 4.5% interest compounded annually. Option B will pay him 4.6% compounded quarterly. Write a function of option A and option B that calculates the value of each account after  $n$  years. Seth plans to use the money after he graduates from college in 6 years. Determine how much more money option B will earn than option A to the *nearest cent*. Algebraically determine, to the *nearest tenth of a year*, how long it would take for option B to double Seth's initial investment.

- 132 Carla wants to start a college fund for her daughter Lila. She puts \$63,000 into an account that grows at a rate of 2.55% per year, compounded monthly. Write a function,  $C(t)$ , that represents the amount of money in the account  $t$  years after the account is opened, given that no more money is deposited into or withdrawn from the account. Calculate algebraically the number of years it will take for the account to reach \$100,000, to the *nearest hundredth of a year*.

- 133 What is the solution to  $8(2^{x+3}) = 48$ ?

- 1  $x = \frac{\ln 6}{\ln 2} - 3$
- 2  $x = 0$
- 3  $x = \frac{\ln 48}{\ln 16} - 3$
- 4  $x = \ln 4 - 3$

- 134 The solution of  $87e^{0.3x} = 5918$ , to the *nearest thousandth*, is

- 1 0.583
- 2 1.945
- 3 4.220
- 4 14.066

- 135 A house purchased 5 years ago for \$100,000 was just sold for \$135,000. Assuming exponential growth, approximate the annual growth rate, to the *nearest percent*.

- 136 In New York State, the minimum wage has grown exponentially. In 1966, the minimum wage was \$1.25 an hour and in 2015, it was \$8.75. Algebraically determine the rate of growth to the *nearest percent*.
- 137 Judith puts \$5000 into an investment account with interest compounded continuously. Which approximate annual rate is needed for the account to grow to \$9110 after 30 years?
- 1 2%
  - 2 2.2%
  - 3 0.02%
  - 4 0.022%
- 138 If  $ae^{bt} = c$ , where  $a$ ,  $b$ , and  $c$  are positive, then  $t$  equals
- 1  $\ln\left(\frac{c}{ab}\right)$
  - 2  $\ln\left(\frac{cb}{a}\right)$
  - 3  $\frac{\ln\left(\frac{c}{a}\right)}{b}$
  - 4  $\frac{\ln\left(\frac{c}{a}\right)}{\ln b}$
- 139 Determine, to the *nearest tenth of a year*, how long it would take an investment to double at a  $3\frac{3}{4}\%$  interest rate, compounded continuously.
- 140 One of the medical uses of Iodine-131 (I-131), a radioactive isotope of iodine, is to enhance x-ray images. The half-life of I-131 is approximately 8.02 days. A patient is injected with 20 milligrams of I-131. Determine, to the *nearest day*, the amount of time needed before the amount of I-131 in the patient's body is approximately 7 milligrams.
- 141 After sitting out of the refrigerator for a while, a turkey at room temperature ( $68^\circ\text{F}$ ) is placed into an oven at 8 a.m., when the oven temperature is  $325^\circ\text{F}$ . Newton's Law of Heating explains that the temperature of the turkey will increase proportionally to the difference between the temperature of the turkey and the temperature of the oven, as given by the formula below:
- $$T = T_a + (T_0 - T_a)e^{-kt}$$
- $T_a$  = the temperature surrounding the object  
 $T_0$  = the initial temperature of the object  
 $t$  = the time in hours  
 $T$  = the temperature of the object after  $t$  hours  
 $k$  = decay constant
- The turkey reaches the temperature of approximately  $100^\circ\text{F}$  after 2 hours. Find the value of  $k$ , to the *nearest thousandth*, and write an equation to determine the temperature of the turkey after  $t$  hours. Determine the Fahrenheit temperature of the turkey, to the *nearest degree*, at 3 p.m.



- 142 A radioactive substance has a mass of 140 g at 3 p.m. and 100 g at 8 p.m. Write an equation in the

form  $A = A_0 \left( \frac{1}{2} \right)^{\frac{t}{h}}$  that models this situation,

where  $h$  is the constant representing the number of hours in the half-life,  $A_0$  is the initial mass, and  $A$  is the mass  $t$  hours after 3 p.m. Using this equation, solve for  $h$ , to the *nearest ten thousandth*. Determine when the mass of the radioactive substance will be 40 g. Round your answer to the *nearest tenth of an hour*.

A.SSE.2: FACTORING POLYNOMIALS.  
FACTORING THE DIFFERENCE OF PERFECT  
SQUARES

- 143 What is the completely factored form of  $k^4 - 4k^2 + 8k^3 - 32k + 12k^2 - 48$ ?
- 1  $(k - 2)(k - 2)(k + 3)(k + 4)$
  - 2  $(k - 2)(k - 2)(k + 6)(k + 2)$
  - 3  $(k + 2)(k - 2)(k + 3)(k + 4)$
  - 4  $(k + 2)(k - 2)(k + 6)(k + 2)$
- 144 Rewrite the expression  $(4x^2 + 5x)^2 - 5(4x^2 + 5x) - 6$  as a product of four linear factors.
- 145 Which factorization is *incorrect*?
- 1  $4k^2 - 49 = (2k + 7)(2k - 7)$
  - 2  $a^3 - 8b^3 = (a - 2b)(a^2 + 2ab + 4b^2)$
  - 3  $m^3 + 3m^2 - 4m + 12 = (m - 2)^2(m + 3)$
  - 4  $t^3 + 5t^2 + 6t + t^2 + 5t + 6 = (t + 1)(t + 2)(t + 3)$
- 146 The completely factored form of  $2d^4 + 6d^3 - 18d^2 - 54d$  is
- 1  $2d(d^2 - 9)(d + 3)$
  - 2  $2d(d^2 + 9)(d + 3)$
  - 3  $2d(d + 3)^2(d - 3)$
  - 4  $2d(d - 3)^2(d + 3)$
- 147 Factored completely,  $m^5 + m^3 - 6m$  is equivalent to
- 1  $(m + 3)(m - 2)$
  - 2  $(m^2 + 3m)(m^2 - 2)$
  - 3  $m(m^4 + m^2 - 6)$
  - 4  $m(m^2 + 3)(m^2 - 2)$
- 148 Over the set of integers, factor the expression  $4x^3 - x^2 + 16x - 4$  completely.
- 149 Which expression has been rewritten correctly to form a true statement?
- 1  $(x + 2)^2 + 2(x + 2) - 8 = (x + 6)x$
  - 2  $x^4 + 4x^2 + 9x^2y^2 - 36y^2 = (x + 3y)^2(x - 2)^2$
  - 3  $x^3 + 3x^2 - 4xy^2 - 12y^2 = (x - 2y)(x + 3)^2$
  - 4  $(x^2 - 4)^2 - 5(x^2 - 4) - 6 = (x^2 - 7)(x^2 - 6)$
- 150 Completely factor the following expression:  
 $x^2 + 3xy + 3x^3 + y$
- 151 Over the set of integers, factor the expression  $x^4 - 4x^2 - 12$ .

152 Which expression is equivalent to

$$x^6y^4(x^4 - 16) - 9(x^4 - 16)?$$

1  $x^{10}y^4 - 16x^6y^4 - 9x^4 - 144$

2  $(x^6y^4 - 9)(x + 2)^3(x - 2)$

3  $(x^3y^2 + 3)(x^3y^2 - 3)(x + 2)^2(x - 2)^2$

4  $(x^3y^2 + 3)(x^3y^2 - 3)(x^2 + 4)(x^2 - 4)$

155 What are the zeros of  $P(m) = (m^2 - 4)(m^2 + 1)$ ?

1 2 and -2, only

2 2, -2, and -4

3 -4,  $i$ , and  $-i$

4 2, -2,  $i$ , and  $-i$

A.APR.B.3: ZEROS OF POLYNOMIALS

153 The zeros for  $f(x) = x^4 - 4x^3 - 9x^2 + 36x$  are

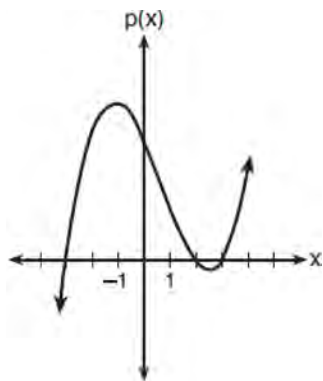
1  $\{0, \pm 3, 4\}$

2  $\{0, 3, 4\}$

3  $\{0, \pm 3, -4\}$

4  $\{0, 3, -4\}$

154 The graph of the function  $p(x)$  is sketched below.



Which equation could represent  $p(x)$ ?

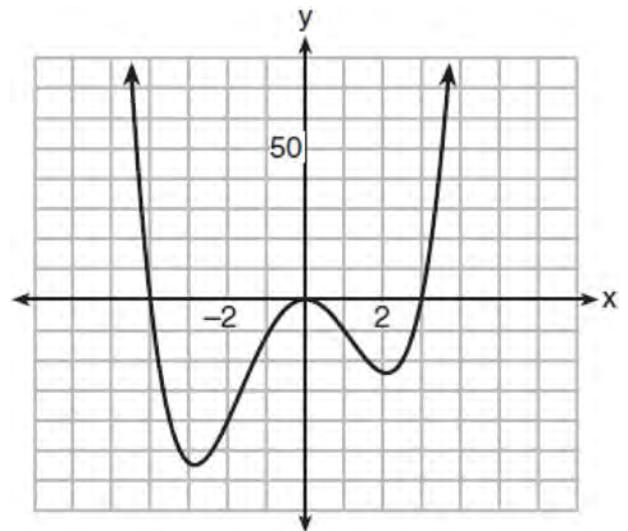
1  $p(x) = (x^2 - 9)(x - 2)$

2  $p(x) = x^3 - 2x^2 + 9x + 18$

3  $p(x) = (x^2 + 9)(x - 2)$

4  $p(x) = x^3 + 2x^2 - 9x - 18$

156 The graph of  $y = f(x)$  is shown below. The function has a leading coefficient of 1.



Write an equation for  $f(x)$ . The function  $g$  is formed by translating function  $f$  left 2 units. Write an equation for  $g(x)$ .

157 If  $x - 1$  is a factor of  $x^3 - kx^2 + 2x$ , what is the value of  $k$ ?

1 0

2 2

3 3

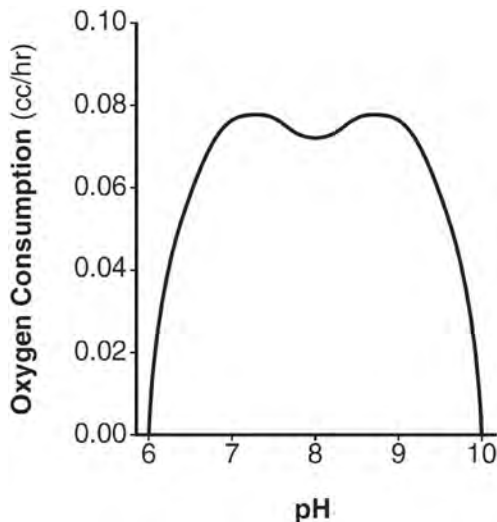
4 -3

A.APR.B.3: SOLVING POLYNOMIAL EQUATIONS

- 158 Given  $c(m) = m^3 - 2m^2 + 4m - 8$ , the solution of  $c(m) = 0$  is
- 1  $\pm 2$
  - 2 2, only
  - 3  $2i, 2$
  - 4  $\pm 2i, 2$

F.IF.B.4, F.IF.C.7: GRAPHING POLYNOMIAL FUNCTIONS

- 159 There was a study done on oxygen consumption of snails as a function of pH, and the result was a degree 4 polynomial function whose graph is shown below.

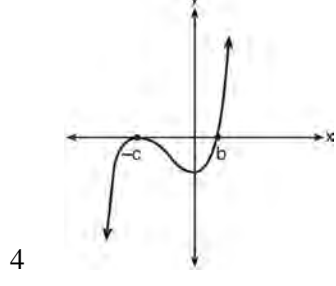
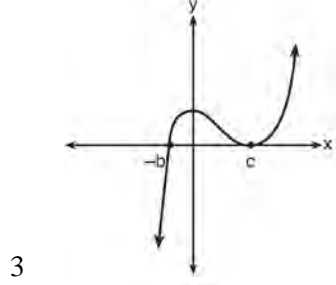
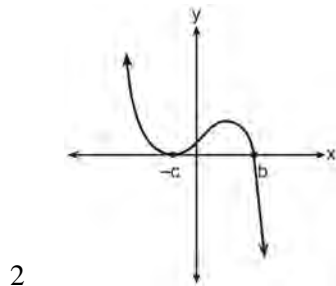
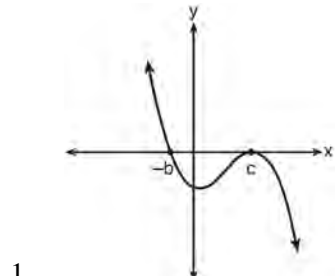


- Which statement about this function is *incorrect*?
- 1 The degree of the polynomial is even.
  - 2 There is a positive leading coefficient.
  - 3 At two pH values, there is a relative maximum value.
  - 4 There are two intervals where the function is decreasing.

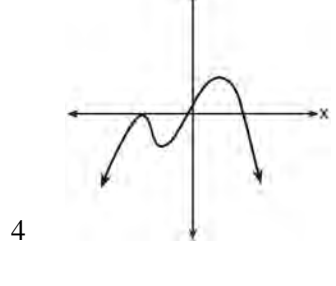
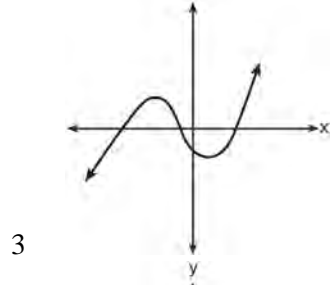
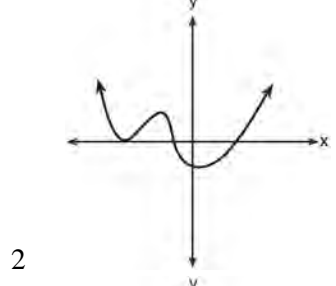
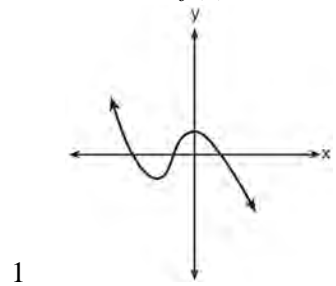
- 160 A polynomial equation of degree three,  $p(x)$ , is used to model the volume of a rectangular box. The graph of  $p(x)$  has  $x$  intercepts at  $-2$ ,  $10$ , and  $14$ . Which statements regarding  $p(x)$  could be true?
- A. The equation of  $p(x) = (x - 2)(x + 10)(x + 14)$ .
  - B. The equation of  $p(x) = -(x + 2)(x - 10)(x - 14)$ .
  - C. The maximum volume occurs when  $x = 10$ .
  - D. The maximum volume of the box is approximately 56.
- 1 A and C
  - 2 A and D
  - 3 B and C
  - 4 B and D

- 161 The function below models the average price of gas in a small town since January 1st.
- $$G(t) = -0.0049t^4 + 0.0923t^3 - 0.56t^2 + 1.166t + 3.23,$$
- where  $0 \leq t \leq 10$ . If  $G(t)$  is the average price of gas in dollars and  $t$  represents the number of months since January 1st, the absolute maximum  $G(t)$  reaches over the given domain is about
- 1 \$1.60
  - 2 \$3.92
  - 3 \$4.01
  - 4 \$7.73

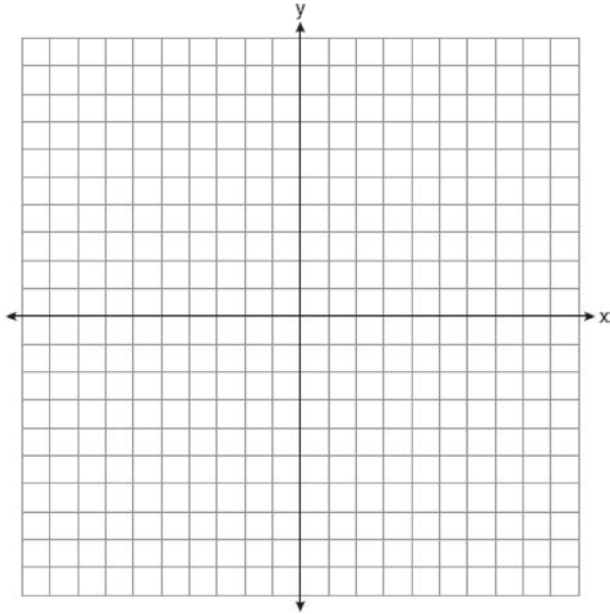
162 If  $a$ ,  $b$ , and  $c$  are all positive real numbers, which graph could represent the sketch of the graph of  $p(x) = -a(x+b)(x^2 - 2cx + c^2)$ ?



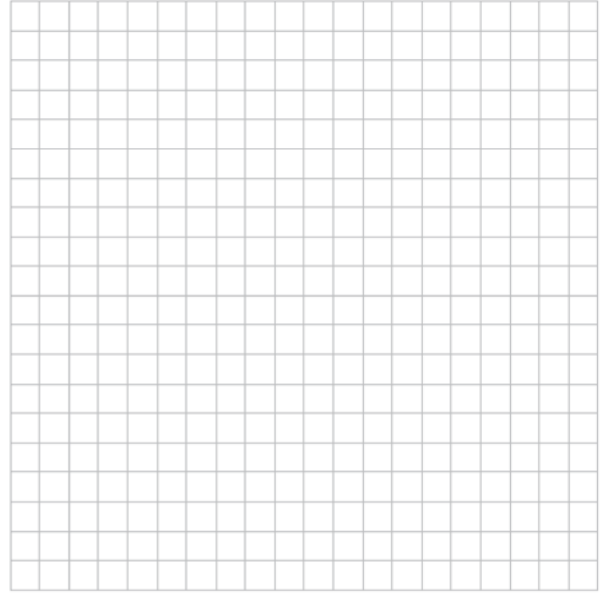
163 Which graph has the following characteristics?  
 • three real zeros  
 • as  $x \rightarrow -\infty$ ,  $f(x) \rightarrow -\infty$   
 • as  $x \rightarrow \infty$ ,  $f(x) \rightarrow \infty$



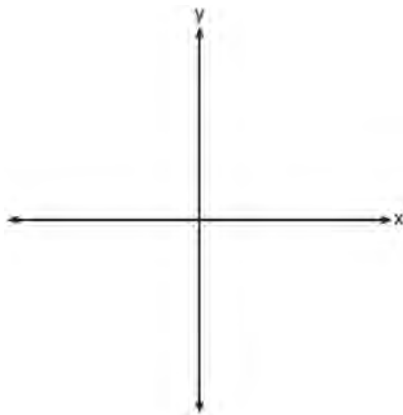
- 164 Find algebraically the zeros for  
 $p(x) = x^3 + x^2 - 4x - 4$ . On the set of axes below,  
graph  $y = p(x)$ .



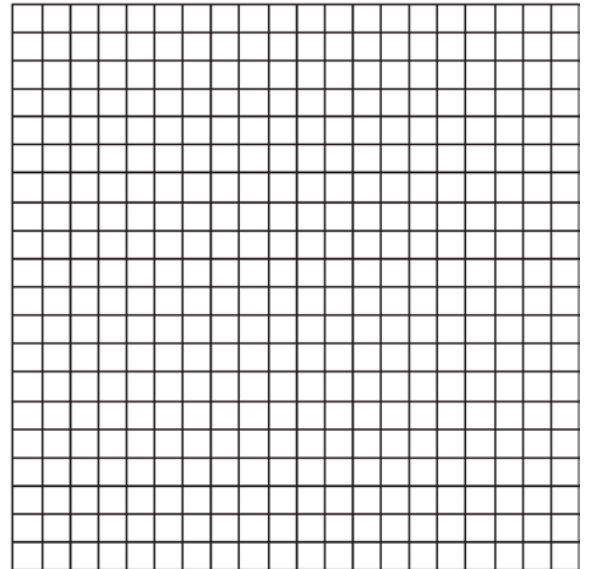
- 166 On the grid below, sketch a cubic polynomial  
whose zeros are 1, 3, and -2.



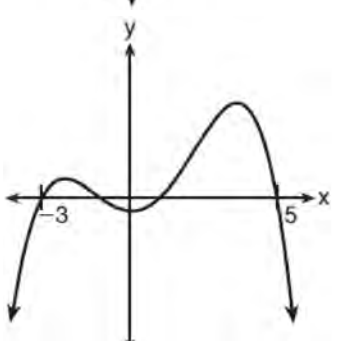
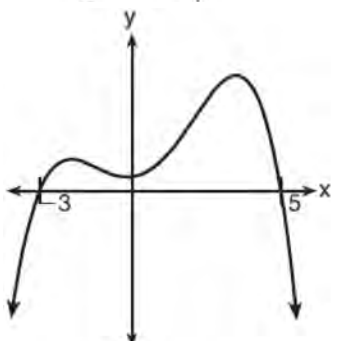
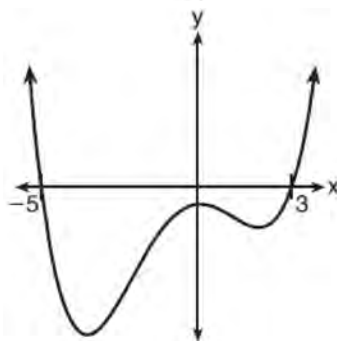
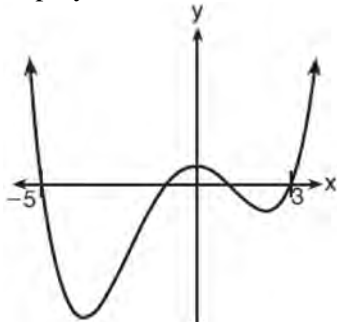
- 165 On the axes below, sketch a possible function  
 $p(x) = (x - a)(x - b)(x + c)$ , where  $a$ ,  $b$ , and  $c$  are  
positive,  $a > b$ , and  $p(x)$  has a positive  $y$ -intercept  
of  $d$ . Label all intercepts.



- 167 The zeros of a quartic polynomial function  $h$  are  
 $-1, \pm 2$ , and  $3$ . Sketch a graph of  $y = h(x)$  on the  
grid below.



- 168 A 4th degree polynomial has zeros  $-5$ ,  $3$ ,  $i$ , and  $-i$ . Which graph could represent the function defined by this polynomial?

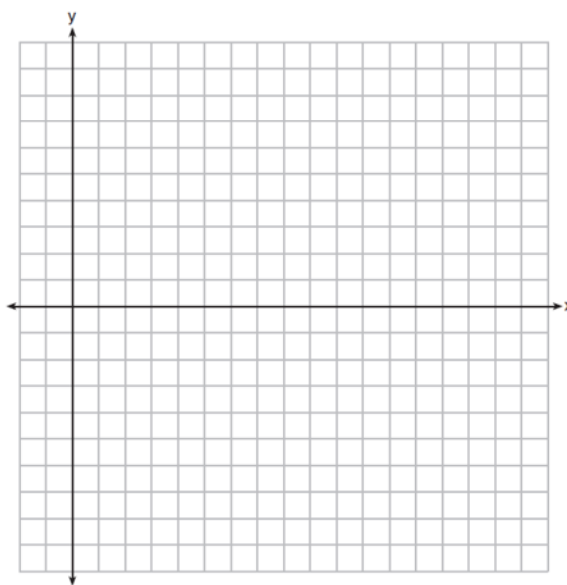


- 169 A major car company analyzes its revenue,  $R(x)$ , and costs  $C(x)$ , in millions of dollars over a fifteen-year period. The company represents its revenue and costs as a function of time, in years,  $x$ , using the given functions.

$$R(x) = 550x^3 - 12,000x^2 + 83,000x + 7000$$

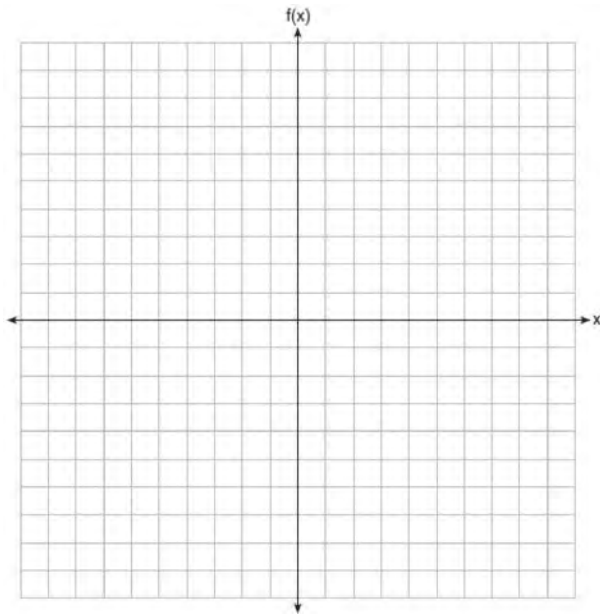
$$C(x) = 880x^3 - 21,000x^2 + 150,000x - 160,000$$

The company's profits can be represented as the difference between its revenue and costs. Write the profit function,  $P(x)$ , as a polynomial in standard form. Graph  $y = P(x)$  on the set of axes below over the domain  $2 \leq x \leq 16$ .



Over the given domain, state when the company was the least profitable and the most profitable, to the *nearest year*. Explain how you determined your answer.

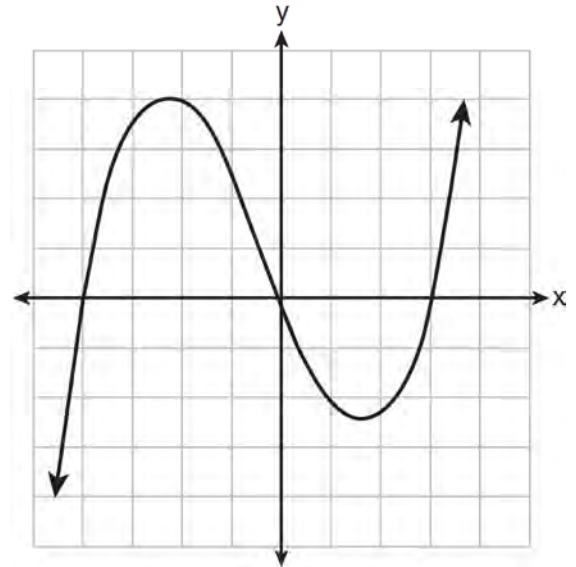
- 170 On the grid below, graph the function  
 $f(x) = x^3 - 6x^2 + 9x + 6$  on the domain  $-1 \leq x \leq 4$ .



A.APR.B.2: REMAINDER THEOREM

- 171 Use an appropriate procedure to show that  $x - 4$  is a factor of the function  $f(x) = 2x^3 - 5x^2 - 11x - 4$ . Explain your answer.
- 172 Given  $z(x) = 6x^3 + bx^2 - 52x + 15$ ,  $z(2) = 35$ , and  $z(-5) = 0$ , algebraically determine all the zeros of  $z(x)$ .
- 173 Determine if  $x - 5$  is a factor of  $2x^3 - 4x^2 - 7x - 10$ . Explain your answer.

- 174 The graph of  $p(x)$  is shown below.



What is the remainder when  $p(x)$  is divided by  $x + 4$ ?

- 1  $x - 4$
  - 2  $-4$
  - 3  $0$
  - 4  $4$
- 175 When  $g(x)$  is divided by  $x + 4$ , the remainder is 0. Given  $g(x) = x^4 + 3x^3 - 6x^2 - 6x + 8$ , which conclusion about  $g(x)$  is true?
- 1  $g(4) = 0$
  - 2  $g(-4) = 0$
  - 3  $x - 4$  is a factor of  $g(x)$ .
  - 4 No conclusion can be made regarding  $g(x)$ .
- 176 Which binomial is a factor of  $x^4 - 4x^2 - 4x + 8$ ?
- 1  $x - 2$
  - 2  $x + 2$
  - 3  $x - 4$
  - 4  $x + 4$

Algebra II Regents Exam Questions by State Standard: Topic

[www.jmap.org](http://www.jmap.org)

177 Given  $r(x) = x^3 - 4x^2 + 4x - 6$ , find the value of  $r(2)$ . What does your answer tell you about  $x - 2$  as a factor of  $r(x)$ ? Explain.

178 Which binomial is *not* a factor of the expression  $x^3 - 11x^2 + 16x + 84$ ?

- 1  $x + 2$
- 2  $x + 4$
- 3  $x - 6$
- 4  $x - 7$

179 If  $p(x) = 2x^3 - 3x + 5$ , what is the remainder of  $p(x) \div (x - 5)$ ?

- 1  $-230$
- 2  $0$
- 3  $40$
- 4  $240$

180 Evaluate  $j(-1)$  given

$j(x) = 2x^4 - x^3 - 35x^2 + 16x + 48$ . Explain what your answer tells you about  $x + 1$  as a factor. Algebraically find the remaining zeros of  $j(x)$ .

A.APR.C.4: POLYNOMIAL IDENTITIES

181 Algebraically prove that the difference of the squares of any two consecutive integers is an odd integer.

182 Algebraically prove that  $\frac{x^3 + 9}{x^3 + 8} = 1 + \frac{1}{x^3 + 8}$ , where  $x \neq -2$ .

183 Mr. Farison gave his class the three mathematical rules shown below to either prove or disprove. Which rules can be proved for all real numbers?

I  $(m + p)^2 = m^2 + 2mp + p^2$

II  $(x + y)^3 = x^3 + 3xy + y^3$

III  $(a^2 + b^2)^2 = (a^2 - b^2)^2 + (2ab)^2$

- 1 I, only
- 2 I and II
- 3 II and III
- 4 I and III

184 Algebraically determine the values of  $h$  and  $k$  to correctly complete the identity stated below.

$$2x^3 - 10x^2 + 11x - 7 = (x - 4)(2x^2 + hx + 3) + k$$

185 Verify the following Pythagorean identity for all values of  $x$  and  $y$ :

$$(x^2 + y^2)^2 = (x^2 - y^2)^2 + (2xy)^2$$

186 The expression  $(x + a)(x + b)$  can *not* be written as

- 1  $a(x + b) + x(x + b)$
- 2  $x^2 + abx + ab$
- 3  $x^2 + (a + b)x + ab$
- 4  $x(x + a) + b(x + a)$



187 Which expression can be rewritten as  $(x+7)(x-1)$ ?

- 1  $(x+3)^2 - 16$
- 2  $(x+3)^2 - 10(x+3) - 2(x+3) + 20$
- 3  $\frac{(x-1)(x^2 - 6x - 7)}{(x+1)}$
- 4  $\frac{(x+7)(x^2 + 4x + 3)}{(x+3)}$

188 Given the following polynomials

$$x = (a + b + c)^2$$

$$y = a^2 + b^2 + c^2$$

$$z = ab + bc + ac$$

Which identity is true?

- 1  $x = y - z$
- 2  $x = y + z$
- 3  $x = y - 2z$
- 4  $x = y + 2z$

## RADICALS

### N.RN.A.2: OPERATIONS WITH RADICALS

189 Write  $\sqrt[3]{x} \cdot \sqrt{x}$  as a single term with a rational exponent.

190 For positive values of  $x$ , which expression is

equivalent to  $\sqrt{16x^2} \cdot x^{\frac{2}{3}} + \sqrt[3]{8x^5}$

- 1  $6\sqrt[3]{x^5}$
- 2  $6\sqrt{x^3}$
- 3  $4\sqrt[3]{x^2} + 2\sqrt[3]{x^5}$
- 4  $4\sqrt{x^3} + 2\sqrt[5]{x^3}$

191 For  $x > 0$ , which expression is equivalent to

$$\frac{\sqrt[3]{x^2} \cdot \sqrt{x^5}}{\sqrt[6]{x}}?$$

- 1  $x$
- 2  $x^{\frac{3}{2}}$
- 3  $x^3$
- 4  $x^{10}$

### A.REI.A.2: SOLVING RADICALS

192 Solve algebraically for all values of  $x$ :

$$\sqrt{x-5} + x = 7$$

193 The solution set for the equation  $\sqrt{56-x} = x$  is

- 1  $\{-8, 7\}$
- 2  $\{-7, 8\}$
- 3  $\{7\}$
- 4  $\{ \}$

194 Solve the equation  $\sqrt{2x-7} + x = 5$  algebraically, and justify the solution set.

195 The speed of a tidal wave,  $s$ , in hundreds of miles per hour, can be modeled by the equation  $s = \sqrt{t} - 2t + 6$ , where  $t$  represents the time from its origin in hours. Algebraically determine the time when  $s = 0$ . How much faster was the tidal wave traveling after 1 hour than 3 hours, to the nearest mile per hour? Justify your answer.

- 196 Solve algebraically for all values of  $x$ :

$$\sqrt{x-4} + x = 6$$

- 197 The solution set for the equation

$$\sqrt{x+14} - \sqrt{2x+5} = 1$$

- 1  $\{-6\}$
- 2  $\{2\}$
- 3  $\{18\}$
- 4  $\{2,22\}$

- 198 What is the solution set for  $x$  in the equation below?

$$\sqrt{x+1} - 1 = x$$

- 1  $\{1\}$
- 2  $\{0\}$
- 3  $\{-1,0\}$
- 4  $\{0,1\}$

- 199 Solve algebraically for all values of  $x$ :

$$\sqrt{6-2x} + x = 2(x+15) - 9$$

- 200 The value(s) of  $x$  that satisfy

$$\sqrt{x^2 - 4x - 5} = 2x - 10$$

- 1  $\{5\}$
- 2  $\{7\}$
- 3  $\{5,7\}$
- 4  $\{3,5,7\}$

N.RN.A.1-2: RADICALS AND RATIONAL EXPONENTS

- 201 Explain how  $\left(3^{\frac{1}{5}}\right)^2$  can be written as the equivalent radical expression  $\sqrt[5]{9}$ .

- 202 Explain how  $(-8)^{\frac{4}{3}}$  can be evaluated using properties of rational exponents to result in an integer answer.

- 203 Explain why  $81^{\frac{3}{4}}$  equals 27.

- 204 Use the properties of rational exponents to determine the value of  $y$  for the equation:

$$\frac{\sqrt[3]{x^8}}{\left(x^4\right)^{\frac{1}{3}}} = x^y, \quad x > 1$$

- 205 Given the equal terms  $\sqrt[3]{x^5}$  and  $y^{\frac{5}{6}}$ , determine and state  $y$ , in terms of  $x$ .

206 The expression  $\left(\frac{m^2}{m^{\frac{1}{3}}}\right)^{-\frac{1}{2}}$  is equivalent to

- 1  $-\sqrt[6]{m^5}$
- 2  $\frac{1}{\sqrt[6]{m^5}}$
- 3  $-m^5\sqrt{m}$
- 4  $\frac{1}{m^5\sqrt{m}}$

207 When  $b > 0$  and  $d$  is a positive integer, the

expression  $(3b)^{\frac{2}{d}}$  is equivalent to

- 1  $\frac{1}{\left(\sqrt[d]{3b}\right)^2}$
- 2  $\left(\sqrt{3b}\right)^d$
- 3  $\frac{1}{\sqrt{3b^d}}$
- 4  $\left(\sqrt[d]{3b}\right)^2$

208 For  $x \neq 0$ , which expressions are equivalent to one divided by the sixth root of  $x$ ?

I.  $\frac{\sqrt[6]{x}}{\sqrt[3]{x}}$  II.  $\frac{x^{\frac{1}{6}}}{x^{\frac{1}{3}}}$  III.  $x^{-\frac{1}{6}}$

- 1 I and II, only
- 2 I and III, only
- 3 II and III, only
- 4 I, II, and III

209 What does  $\left(\frac{-54x^9}{y^4}\right)^{\frac{2}{3}}$  equal?

- 1  $\frac{9ix^6\sqrt[3]{4}}{y^2\sqrt[3]{y^2}}$
- 2  $\frac{9ix^6\sqrt[3]{4}}{y^2\sqrt[3]{y^2}}$
- 3  $\frac{9x^6\sqrt[3]{4}}{y^2\sqrt[3]{y}}$
- 4  $\frac{9x^6\sqrt[3]{4}}{y^2\sqrt[3]{y^2}}$

210 If  $n = \sqrt{a^5}$  and  $m = a$ , where  $a > 0$ , an expression for  $\frac{n}{m}$  could be

- 1  $a^{\frac{5}{2}}$
- 2  $a^4$
- 3  $\sqrt[3]{a^2}$
- 4  $\sqrt{a^3}$

211 Express the fraction  $\frac{2x^{\frac{3}{2}}}{\left(16x^4\right)^{\frac{1}{4}}}$  in simplest radical form.

N.CN.A.2: OPERATIONS WITH COMPLEX NUMBERS

- 212 Write  $(5 + 2yi)(4 - 3i) - (5 - 2yi)(4 - 3i)$  in  $a + bi$  form, where  $y$  is a real number.
- 213 Given  $i$  is the imaginary unit,  $(2 - yi)^2$  in simplest form is
- 1  $y^2 - 4yi + 4$
  - 2  $-y^2 - 4yi + 4$
  - 3  $-y^2 + 4$
  - 4  $y^2 + 4$
- 214 Simplify  $xi(i - 7i)^2$ , where  $i$  is the imaginary unit.
- 215 Express  $(1 - i)^3$  in  $a + bi$  form.
- 216 The expression  $6xi^3(-4xi + 5)$  is equivalent to
- 1  $2x - 5i$
  - 2  $-24x^2 - 30xi$
  - 3  $-24x^2 + 30x - i$
  - 4  $26x - 24x^2i - 5i$
- 217 Which expression is equivalent to  $(3k - 2i)^2$ , where  $i$  is the imaginary unit?
- 1  $9k^2 - 4$
  - 2  $9k^2 + 4$
  - 3  $9k^2 - 12ki - 4$
  - 4  $9k^2 - 12ki + 4$
- 218 Elizabeth tried to find the product of  $(2 + 4i)$  and  $(3 - i)$ , and her work is shown below.
- $$\begin{aligned} &(2 + 4i)(3 - i) \\ &= 6 - 2i + 12i - 4i^2 \\ &= 6 + 10i - 4i^2 \\ &= 6 + 10i - 4(1) \\ &= 6 + 10i - 4 \\ &= 2 + 10i \end{aligned}$$
- Identify the error in the process shown and determine the correct product of  $(2 + 4i)$  and  $(3 - i)$ .
- 219 Where  $i$  is the imaginary unit, the expression  $(x + 3i)^2 - (2x - 3i)^2$  is equivalent to
- 1  $-3x^2$
  - 2  $-3x^2 - 18$
  - 3  $-3x^2 - 18xi$
  - 4  $-3x^2 - 6xi - 18$
- 220 If  $A = -3 + 5i$ ,  $B = 4 - 2i$ , and  $C = 1 + 6i$ , where  $i$  is the imaginary unit, then  $A - BC$  equals
- 1  $5 - 17i$
  - 2  $5 + 27i$
  - 3  $-19 - 17i$
  - 4  $-19 + 27i$

## RATIONALS

### A.APR.D.6: UNDEFINED RATIONALS

- 221 The function  $f(x) = \frac{x-3}{x^2+2x-8}$  is undefined when  $x$  equals
- 1 2 or  $-4$
  - 2 4 or  $-2$
  - 3 3, only
  - 4 2, only

### A.APR.D.6: EXPRESSIONS WITH NEGATIVE EXPONENTS

- 222 The expression  $\frac{-3x^2-5x+2}{x^3+2x^2}$  can be rewritten as
- 1  $\frac{-3x-3}{x^2+2x}$
  - 2  $\frac{-3x-1}{x^2}$
  - 3  $-3x^{-1}+1$
  - 4  $-3x^{-1}+x^{-2}$

### A.APR.D.6: RATIONAL EXPRESSIONS

- 223 The expression  $\frac{6x^3+17x^2+10x+2}{2x+3}$  equals
- 1  $3x^2+4x-1+\frac{5}{2x+3}$
  - 2  $6x^2+8x-2+\frac{5}{2x+3}$
  - 3  $6x^2-x+13-\frac{37}{2x+3}$
  - 4  $3x^2+13x+\frac{49}{2}+\frac{151}{2x+3}$

- 224 The expression  $\frac{4x^3+5x+10}{2x+3}$  is equivalent to
- 1  $2x^2+3x-7+\frac{31}{2x+3}$
  - 2  $2x^2-3x+7-\frac{11}{2x+3}$
  - 3  $2x^2+2.5x+5+\frac{15}{2x+3}$
  - 4  $2x^2-2.5x-5-\frac{20}{2x+3}$

- 225 The expression  $\frac{x^3+2x^2+x+6}{x+2}$  is equivalent to
- 1  $x^2+3$
  - 2  $x^2+1+\frac{4}{x+2}$
  - 3  $2x^2+x+6$
  - 4  $2x^2+1+\frac{4}{x+2}$

- 226 Which expression is equivalent to  $\frac{4x^3+9x-5}{2x-1}$ , where  $x \neq \frac{1}{2}$ ?

- 1  $2x^2+x+5$
- 2  $2x^2+\frac{11}{2}+\frac{1}{2(2x-1)}$
- 3  $2x^2-x+5$
- 4  $2x^2-x+4+\frac{1}{2x-1}$

227 Written in simplest form,  $\frac{c^2 - d^2}{d^2 + cd - 2c^2}$  where

$c \neq d$ , is equivalent to

1  $\frac{c+d}{d+2c}$

2  $\frac{c-d}{d+2c}$

3  $\frac{-c-d}{d+2c}$

4  $\frac{-c+d}{d+2c}$

228 For all values of  $x$  for which the expression is defined,  $\frac{x^3 + 2x^2 - 9x - 18}{x^3 - x^2 - 6x}$ , in simplest form, is

equivalent to

1 3

2  $-\frac{17}{2}$

3  $\frac{x+3}{x}$

4  $\frac{x^2 - 9}{x(x-3)}$

229 Which expression is equivalent to

$$\frac{2x^4 + 8x^3 - 25x^2 - 6x + 14}{x+6}?$$

1  $2x^3 + 4x^2 + x - 12 + \frac{86}{x+6}$

2  $2x^3 - 4x^2 - x + 14$

3  $2x^3 - 4x^2 - x + \frac{14}{x+6}$

4  $2x^3 - 4x^2 - x$

#### A.APR.D.6: DIVISION OF POLYNOMIALS

230 Given  $f(x) = 3x^2 + 7x - 20$  and  $g(x) = x - 2$ , state the quotient and remainder of  $\frac{f(x)}{g(x)}$ , in the form

$$q(x) + \frac{r(x)}{g(x)}.$$

231 What is the quotient when  $10x^3 - 3x^2 - 7x + 3$  is divided by  $2x - 1$ ?

1  $5x^2 + x + 3$

2  $5x^2 - x + 3$

3  $5x^2 - x - 3$

4  $5x^2 + x - 3$

232 Determine the quotient and remainder when  $(6a^3 + 11a^2 - 4a - 9)$  is divided by  $(3a - 2)$ .

Express your answer in the form  $q(a) + \frac{r(a)}{d(a)}$ .

#### A.CED.A.1: MODELING RATIONALS

233 Julie averaged 85 on the first three tests of the semester in her mathematics class. If she scores 93 on each of the remaining tests, her average will be 90. Which equation could be used to determine how many tests,  $T$ , are left in the semester?

1  $\frac{255 + 93T}{3T} = 90$

2  $\frac{255 + 90T}{3T} = 93$

3  $\frac{255 + 93T}{T+3} = 90$

4  $\frac{255 + 90T}{T+3} = 93$

- 234 Mallory wants to buy a new window air conditioning unit. The cost for the unit is \$329.99. If she plans to run the unit three months out of the year for an annual operating cost of \$108.78, which function models the cost per year over the lifetime of the unit,  $C(n)$ , in terms of the number of years,  $n$ , that she owns the air conditioner.

1  $C(n) = 329.99 + 108.78n$

2  $C(n) = 329.99 + 326.34n$

3  $C(n) = \frac{329.99 + 108.78n}{n}$

4  $C(n) = \frac{329.99 + 326.34n}{n}$

- 235 A formula for work problems involving two people is shown below.

$$\frac{1}{t_1} + \frac{1}{t_2} = \frac{1}{t_b}$$

$t_1$  = the time taken by the first person to complete the job

$t_2$  = the time taken by the second person to complete the job

$t_b$  = the time it takes for them working together to complete the job

Fred and Barney are carpenters who build the same model desk. It takes Fred eight hours to build the desk while it only takes Barney six hours. Write an equation that can be used to find the time it would take both carpenters working together to build a desk. Determine, to the *nearest tenth of an hour*, how long it would take Fred and Barney working together to build a desk.

- 236 A manufacturing plant produces two different-sized containers of peanuts. One container weighs  $x$  ounces and the other weighs  $y$  pounds. If a gift set can hold one of each size container, which expression represents the number of gift sets needed to hold 124 ounces?

1  $\frac{124}{16x + y}$

2  $\frac{x + 16y}{124}$

3  $\frac{124}{x + 16y}$

4  $\frac{16x + y}{124}$

#### A.REI.A.2: SOLVING RATIONALS

- 237 What is the solution set of the equation

$$\frac{3x + 25}{x + 7} - 5 = \frac{3}{x}?$$

1  $\left\{\frac{3}{2}, 7\right\}$

2  $\left\{\frac{7}{2}, -3\right\}$

3  $\left\{-\frac{3}{2}, 7\right\}$

4  $\left\{-\frac{7}{2}, -3\right\}$

- 238 Solve for  $x$ :  $\frac{1}{x} - \frac{1}{3} = -\frac{1}{3x}$

- 239 Solve for all values of  $p$ :  $\frac{3p}{p-5} - \frac{2}{p+3} = \frac{p}{p+3}$

- 240 The focal length,  $F$ , of a camera's lens is related to the distance of the object from the lens,  $J$ , and the distance to the image area in the camera,  $W$ , by the formula below.

$$\frac{1}{J} + \frac{1}{W} = \frac{1}{F}$$

When this equation is solved for  $J$  in terms of  $F$  and  $W$ ,  $J$  equals

- 1  $F - W$
  - 2  $\frac{FW}{F - W}$
  - 3  $\frac{FW}{W - F}$
  - 4  $\frac{1}{F} - \frac{1}{W}$
- 241 What is the solution, if any, of the equation
- $$\frac{2}{x+3} - \frac{3}{4-x} = \frac{2x-2}{x^2-x-12}?$$
- 1  $-1$
  - 2  $-5$
  - 3 all real numbers
  - 4 no real solution

- 242 To solve  $\frac{2x}{x-2} - \frac{11}{x} = \frac{8}{x^2-2x}$ , Ren multiplied

both sides by the least common denominator.

Which statement is true?

- 1 2 is an extraneous solution.
- 2  $\frac{7}{2}$  is an extraneous solution.
- 3 0 and 2 are extraneous solutions.
- 4 This equation does not contain any extraneous solutions.

- 243 The solutions to  $x + 3 - \frac{4}{x-1} = 5$  are

- 1  $\frac{3}{2} \pm \frac{\sqrt{17}}{2}$
- 2  $\frac{3}{2} \pm \frac{\sqrt{17}}{2} i$
- 3  $\frac{3}{2} \pm \frac{\sqrt{33}}{2}$
- 4  $\frac{3}{2} \pm \frac{\sqrt{33}}{2} i$

- 244 What is the solution set of the equation

$$\frac{2}{x} - \frac{3x}{x+3} = \frac{x}{x+3}?$$

- 1  $\{3\}$
- 2  $\left\{\frac{3}{2}\right\}$
- 3  $\{-2, 3\}$
- 4  $\left\{-1, \frac{3}{2}\right\}$

- 245 Algebraically solve for  $x$ :  $\frac{-3}{x+3} + \frac{1}{2} = \frac{x}{6} - \frac{1}{2}$

## FUNCTIONS

### F.BF.A.1: OPERATIONS WITH FUNCTIONS

- 246 Given:  $f(x) = 2x^2 + x - 3$  and  $g(x) = x - 1$   
Express  $f(x) \bullet g(x) - [f(x) + g(x)]$  as a polynomial in standard form.



### Algebra II Regents Exam Questions by State Standard: Topic

247 If  $g(c) = 1 - c^2$  and  $m(c) = c + 1$ , then which statement is *not* true?

- 1  $g(c) \cdot m(c) = 1 + c - c^2 - c^3$
- 2  $g(c) + m(c) = 2 + c - c^2$
- 3  $m(c) - g(c) = c + c^2$
- 4  $\frac{m(c)}{g(c)} = \frac{-1}{1 - c}$

248 If  $p(x) = ab^x$  and  $r(x) = cd^x$ , then  $p(x) \bullet r(x)$  equals

- 1  $ac(b + d)^x$
- 2  $ac(b + d)^{2x}$
- 3  $ac(bd)^x$
- 4  $ac(bd)^{x^2}$

249 A manufacturing company has developed a cost model,  $C(x) = 0.15x^3 + 0.01x^2 + 2x + 120$ , where  $x$  is the number of items sold, in thousands. The sales price can be modeled by  $S(x) = 30 - 0.01x$ . Therefore, revenue is modeled by  $R(x) = x \bullet S(x)$ . The company's profit,  $P(x) = R(x) - C(x)$ , could be modeled by

- 1  $0.15x^3 + 0.02x^2 - 28x + 120$
- 2  $-0.15x^3 - 0.02x^2 + 28x - 120$
- 3  $-0.15x^3 + 0.01x^2 - 2.01x - 120$
- 4  $-0.15x^3 + 32x + 120$

250 The profit function,  $p(x)$ , for a company is the cost function,  $c(x)$ , subtracted from the revenue function,  $r(x)$ . The profit function for the Acme Corporation is  $p(x) = -0.5x^2 + 250x - 300$  and the revenue function is  $r(x) = -0.3x^2 + 150x$ . The cost function for the Acme Corporation is

- 1  $c(x) = 0.2x^2 - 100x + 300$
- 2  $c(x) = 0.2x^2 + 100x + 300$
- 3  $c(x) = -0.2x^2 + 100x - 300$
- 4  $c(x) = -0.8x^2 + 400x - 300$

251 If  $f(x) = x^2 + 9$  and  $g(x) = x + 3$ , which operation would not result in a polynomial expression?

- 1  $f(x) + g(x)$
- 2  $f(x) - g(x)$
- 3  $f(x) \bullet g(x)$
- 4  $f(x) \div g(x)$

#### F.IF.C.9: COMPARING FUNCTIONS

252 Which statement regarding the graphs of the functions below is *untrue*?

$$f(x) = 3 \sin 2x, \text{ from } -\pi < x < \pi$$

$$g(x) = (x - 0.5)(x + 4)(x - 2)$$

$$h(x) = \log_2 x$$

$$j(x) = -|4x - 2| + 3$$

- 1  $f(x)$  and  $j(x)$  have a maximum  $y$ -value of 3.
- 2  $f(x)$ ,  $h(x)$ , and  $j(x)$  have one  $y$ -intercept.
- 3  $g(x)$  and  $j(x)$  have the same end behavior as  $x \rightarrow -\infty$ .
- 4  $g(x)$ ,  $h(x)$ , and  $j(x)$  have rational zeros.

253 Which function shown below has a greater average rate of change on the interval  $[-2,4]$ ? Justify your answer.

<b>x</b>	<b>f(x)</b>
-4	0.3125
-3	0.625
-2	1.25
-1	2.5
0	5
1	10
2	20
3	40
4	80
5	160
6	320

$$g(x) = 4x^3 - 5x^2 + 3$$

254 The  $x$ -value of which function's  $x$ -intercept is larger,  $f$  or  $h$ ? Justify your answer.

$$f(x) = \log(x - 4)$$

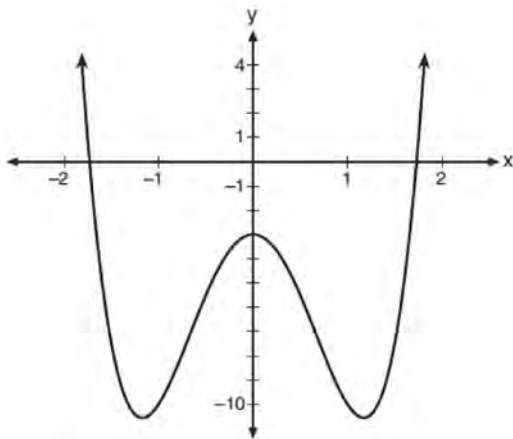
<b>x</b>	<b>h(x)</b>
-1	6
0	4
1	2
2	0
3	-2

255 Consider the function  $h(x) = 2\sin(3x) + 1$  and the function  $q$  represented in the table below.

<b>x</b>	<b>q(x)</b>
-2	-8
-1	0
0	0
1	-2
2	0

Determine which function has the *smaller* minimum value for the domain  $[-2,2]$ . Justify your answer.

256 Consider the function  $p(x) = 3x^3 + x^2 - 5x$  and the graph of  $y = m(x)$  below.

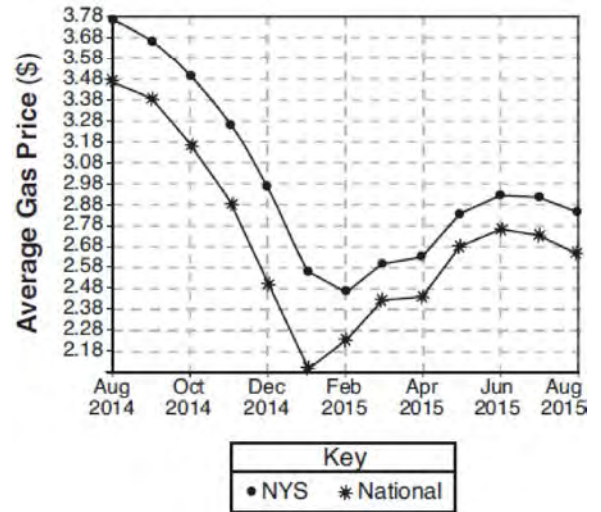


Which statement is true?

- 1  $p(x)$  has three real roots and  $m(x)$  has two real roots.
- 2  $p(x)$  has one real root and  $m(x)$  has two real roots.
- 3  $p(x)$  has two real roots and  $m(x)$  has three real roots.
- 4  $p(x)$  has three real roots and  $m(x)$  has four real roots.

F.BF.B.3: TRANSFORMATIONS WITH FUNCTIONS

257 The graph below represents national and New York State average gas prices.



If New York State's gas prices are modeled by  $G(x)$  and  $C > 0$ , which expression best approximates the national average  $x$  months from August 2014?

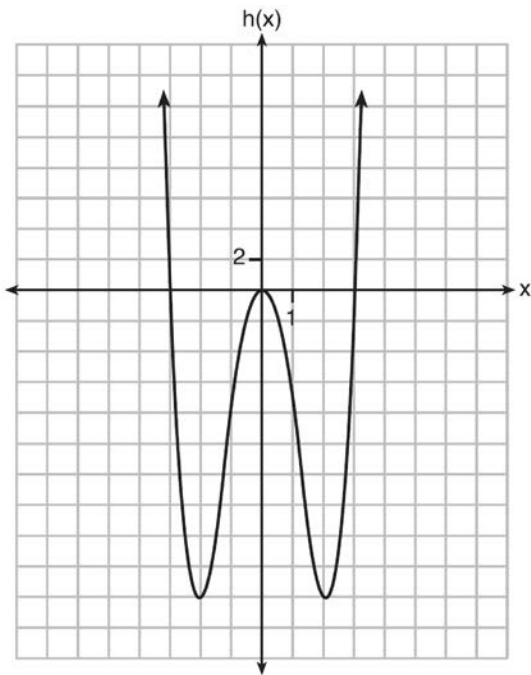
- 1  $G(x + C)$
- 2  $G(x) + C$
- 3  $G(x - C)$
- 4  $G(x) - C$

F.BF.B.3: EVEN AND ODD FUNCTIONS

258 Functions  $f$ ,  $g$ , and  $h$  are given below.

$$f(x) = \sin(2x)$$

$$g(x) = f(x) + 1$$



Which statement is true about functions  $f$ ,  $g$ , and  $h$ ?

- 1  $f(x)$  and  $g(x)$  are odd,  $h(x)$  is even.
- 2  $f(x)$  and  $g(x)$  are even,  $h(x)$  is odd.
- 3  $f(x)$  is odd,  $g(x)$  is neither,  $h(x)$  is even.
- 4  $f(x)$  is even,  $g(x)$  is neither,  $h(x)$  is odd.

259 Which equation represents an odd function?

- 1  $y = \sin x$
- 2  $y = \cos x$
- 3  $y = (x + 1)^3$
- 4  $y = e^{5x}$

260 Algebraically determine whether the function  $j(x) = x^4 - 3x^2 - 4$  is odd, even, or neither.

261 Which function is even?

- 1  $f(x) = \sin x$
- 2  $f(x) = x^2 - 4$
- 3  $f(x) = |x - 2| + 5$
- 4  $f(x) = x^4 + 3x^3 + 4$

F.BF.B.4: INVERSE OF FUNCTIONS

262 For the function  $f(x) = (x - 3)^3 + 1$ , find  $f^{-1}(x)$ .

263 Given  $f^{-1}(x) = -\frac{3}{4}x + 2$ , which equation represents  $f(x)$ ?

- 1  $f(x) = \frac{4}{3}x - \frac{8}{3}$
- 2  $f(x) = -\frac{4}{3}x + \frac{8}{3}$
- 3  $f(x) = \frac{3}{4}x - 2$
- 4  $f(x) = -\frac{3}{4}x + 2$

264 What is the inverse of the function  $y = \log_3 x$ ?

- 1  $y = x^3$
- 2  $y = \log_x 3$
- 3  $y = 3^x$
- 4  $x = 3^y$

265 The inverse of the function  $f(x) = \frac{x+1}{x-2}$  is

1  $f^{-1}(x) = \frac{x+1}{x+2}$

2  $f^{-1}(x) = \frac{2x+1}{x-1}$

3  $f^{-1}(x) = \frac{x+1}{x-2}$

4  $f^{-1}(x) = \frac{x-1}{x+1}$

266 What is the inverse of  $f(x) = -6(x-2)$ ?

1  $f^{-1}(x) = -2 - \frac{x}{6}$

2  $f^{-1}(x) = 2 - \frac{x}{6}$

3  $f^{-1}(x) = \frac{1}{-6(x-2)}$

4  $f^{-1}(x) = 6(x+2)$

267 What is the inverse of  $f(x) = x^3 - 2$ ?

1  $f^{-1}(x) = \sqrt[3]{x+2}$

2  $f^{-1}(x) = \pm\sqrt[3]{x+2}$

3  $f^{-1}(x) = \sqrt[3]{x+2}$

4  $f^{-1}(x) = \pm\sqrt[3]{x+2}$

268 Given  $f(x) = \frac{1}{2}x + 8$ , which equation represents the inverse,  $g(x)$ ?

1  $g(x) = 2x - 8$

2  $g(x) = 2x - 16$

3  $g(x) = -\frac{1}{2}x + 8$

4  $g(x) = -\frac{1}{2}x - 16$

## SEQUENCES AND SERIES

### F.LE.A.2, F.IF.A.3, F.BF.A.2: SEQUENCES

269 The sequence  $a_1 = 6$ ,  $a_n = 3a_{n-1}$  can also be written as

1  $a_n = 6 \cdot 3^n$

2  $a_n = 6 \cdot 3^{n+1}$

3  $a_n = 2 \cdot 3^n$

4  $a_n = 2 \cdot 3^{n+1}$

270 Given  $f(9) = -2$ , which function can be used to generate the sequence  $-8, -7.25, -6.5, -5.75, \dots$ ?

1  $f(n) = -8 + 0.75n$

2  $f(n) = -8 - 0.75(n-1)$

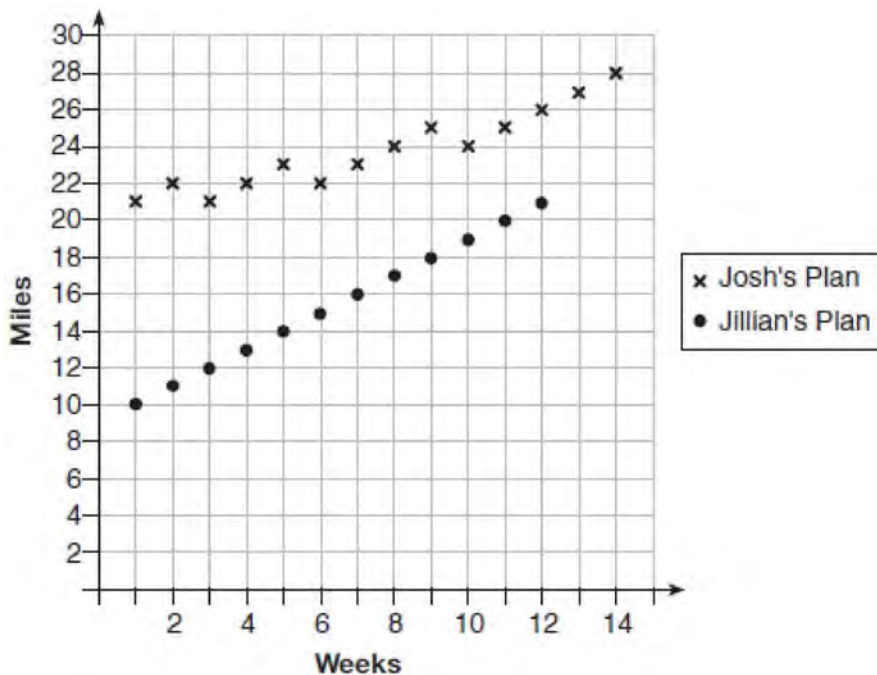
3  $f(n) = -8.75 + 0.75n$

4  $f(n) = -0.75 + 8(n-1)$

271 While experimenting with her calculator, Candy creates the sequence  $4, 9, 19, 39, 79, \dots$ . Write a recursive formula for Candy's sequence. Determine the eighth term in Candy's sequence.

272 Simon lost his library card and has an overdue library book. When the book was 5 days late, he owed \$2.25 to replace his library card and pay the fine for the overdue book. When the book was 21 days late, he owed \$6.25 to replace his library card and pay the fine for the overdue book. Suppose the total amount Simon owes when the book is  $n$  days late can be determined by an arithmetic sequence. Determine a formula for  $a_n$ , the  $n$ th term of this sequence. Use the formula to determine the amount of money, in dollars, Simon needs to pay when the book is 60 days late.

- 273 Elaina has decided to run the Buffalo half-marathon in May. She researched training plans on the Internet and is looking at two possible plans: Jillian's 12-week plan and Josh's 14-week plan. The number of miles run per week for each plan is plotted below.



Which one of the plans follows an arithmetic pattern? Explain how you arrived at your answer. Write a recursive definition to represent the number of miles run each week for the duration of the plan you chose. Jillian's plan has an alternative if Elaina wanted to train instead for a full 26-mile marathon. Week one would start at 13 miles and follow the same pattern for the half-marathon, but it would continue for 14 weeks. Write an explicit formula, in *simplest form*, to represent the number of miles run each week for the full-marathon training plan.

- 274 The average depreciation rate of a new boat is approximately 8% per year. If a new boat is purchased at a price of \$75,000, which model is a recursive formula representing the value of the boat  $n$  years after it was purchased?

1  $a_n = 75,000(0.08)^n$

2  $a_0 = 75,000$

$$a_n = (0.92)^n$$

3  $a_n = 75,000(1.08)^n$

4  $a_0 = 75,000$

$$a_n = 0.92(a_{n-1})$$

- 275 The eighth and tenth terms of a sequence are 64 and 100. If the sequence is either arithmetic or geometric, the ninth term can *not* be

1 -82

2 -80

3 80

4 82

- 276 The recursive formula to describe a sequence is shown below.

$$a_1 = 3$$

$$a_n = 1 + 2a_{n-1}$$

State the first four terms of this sequence. Can this sequence be represented using an explicit geometric formula? Justify your answer.

- 277 Write an explicit formula for  $a_n$ , the  $n$ th term of the recursively defined sequence below.

$$a_1 = x + 1$$

$$a_n = x(a_{n-1})$$

For what values of  $x$  would  $a_n = 0$  when  $n > 1$ ?

- 278 The formula below can be used to model which scenario?

$$a_1 = 3000$$

$$a_n = 0.80a_{n-1}$$

- The first row of a stadium has 3000 seats, and each row thereafter has 80 more seats than the row in front of it.
- The last row of a stadium has 3000 seats, and each row before it has 80 fewer seats than the row behind it.
- A bank account starts with a deposit of \$3000, and each year it grows by 80%.
- The initial value of a specialty toy is \$3000, and its value each of the following years is 20% less.

- 279 The population of Jamesburg for the years 2010-2013, respectively, was reported as follows: 250,000 250,937 251,878 252,822

How can this sequence be recursively modeled?

1  $j_n = 250,000(1.00375)^{n-1}$

2  $j_n = 250,000 + 937^{(n-1)}$

3  $j_1 = 250,000$

$$j_n = 1.00375j_{n-1}$$

4  $j_1 = 250,000$

$$j_n = j_{n-1} + 937$$

280 A recursive formula for the sequence 18,9,4.5,... is

1  $g_1 = 18$

$$g_n = \frac{1}{2}g_{n-1}$$

2  $g_n = 18\left(\frac{1}{2}\right)^{n-1}$

3  $g_1 = 18$

$$g_n = 2g_{n-1}$$

4  $g_n = 18(2)^{n-1}$

281 In 2010, the population of New York State was approximately 19,378,000 with an annual growth rate of 1.5%. Assuming the growth rate is maintained for a large number of years, which equation can be used to predict the population of New York State  $t$  years after 2010?

1  $P_t = 19,378,000(1.5)^t$

2  $P_0 = 19,378,000$

$$P_t = 19,378,000 + 1.015P_{t-1}$$

3  $P_t = 19,378,000(1.015)^{t-1}$

4  $P_0 = 19,378,000$

$$P_t = 1.015P_{t-1}$$

282 The Rickerts decided to set up an account for their daughter to pay for her college education. The day their daughter was born, they deposited \$1000 in an account that pays 1.8% compounded annually. Beginning with her first birthday, they deposit an additional \$750 into the account on each of her birthdays. Which expression correctly represents the amount of money in the account  $n$  years after their daughter was born?

1  $a_n = 1000(1.018)^n + 750$

2  $a_n = 1000(1.018)^n + 750n$

3  $a_0 = 1000$

$$a_n = a_{n-1}(1.018) + 750$$

4  $a_0 = 1000$

$$a_n = a_{n-1}(1.018) + 750n$$

283 At her job, Pat earns \$25,000 the first year and receives a raise of \$1000 each year. The explicit formula for the  $n$ th term of this sequence is  $a_n = 25,000 + (n - 1)1000$ . Which rule best represents the equivalent recursive formula?

1  $a_n = 24,000 + 1000n$

2  $a_n = 25,000 + 1000n$

3  $a_1 = 25,000, a_n = a_{n-1} + 1000$

4  $a_1 = 25,000, a_n = a_{n+1} + 1000$



F.BF.B.6: SIGMA NOTATION

284 Kristin wants to increase her running endurance. According to experts, a gradual mileage increase of 10% per week can reduce the risk of injury. If Kristin runs 8 miles in week one, which expression can help her find the total number of miles she will have run over the course of her 6-week training program?

1  $\sum_{n=1}^6 8(1.10)^{n-1}$

2  $\sum_{n=1}^6 8(1.10)^n$

3  $\frac{8 - 8(1.10)^6}{0.90}$

4  $\frac{8 - 8(0.10)^n}{1.10}$

A.SSE.B.4: SERIES

285 Alexa earns \$33,000 in her first year of teaching and earns a 4% increase in each successive year. Write a geometric series formula,  $S_n$ , for Alexa's total earnings over  $n$  years. Use this formula to find Alexa's total earnings for her first 15 years of teaching, to the *nearest cent*.

286 A ball is dropped from a height of 32 feet. It bounces and rebounds 80% of the height from which it was falling. What is the total downward distance, in feet, the ball traveled up to the 12th bounce?

- 1 29
- 2 58
- 3 120
- 4 149

287 Jasmine decides to put \$100 in a savings account each month. The account pays 3% annual interest, compounded monthly. How much money,  $S$ , will Jasmine have after one year?

1  $S = 100(1.03)^{12}$

2  $S = \frac{100 - 100(1.0025)^{12}}{1 - 1.0025}$

3  $S = 100(1.0025)^{12}$

4  $S = \frac{100 - 100(1.03)^{12}}{1 - 1.03}$

288 Using the formula below, determine the monthly payment on a 5-year car loan with a monthly percentage rate of 0.625% for a car with an original cost of \$21,000 and a \$1000 down payment, to the *nearest cent*.

$$P_n = PMT \left( \frac{1 - (1 + i)^{-n}}{i} \right)$$

$P_n$  = present amount borrowed

$n$  = number of monthly pay periods

$PMT$  = monthly payment

$i$  = interest rate per month

The affordable monthly payment is \$300 for the same time period. Determine an appropriate down payment, to the *nearest dollar*.

289 Brian deposited 1 cent into an empty non-interest bearing bank account on the first day of the month. He then additionally deposited 3 cents on the second day, 9 cents on the third day, and 27 cents on the fourth day. What would be the total amount of money in the account at the end of the 20th day if the pattern continued?

- 1 \$11,622,614.67
- 2 \$17,433,922.00
- 3 \$116,226,146.80
- 4 \$1,743,392,200.00

- 290 Jake wants to buy a car and hopes to save at least \$5000 for a down payment. The table below summarizes the amount of money he plans to save each week.

Week	1	2	3	4	5
Money Saved, in Dollars	2	5	12.5	31.25	...

Based on this plan, which expression should he use to determine how much he has saved in  $n$  weeks?

- 1  $\frac{2 - 2(2.5^n)}{1 - 2.5}$                       3  $\frac{1 - 2.5^n}{1 - 2.5}$   
 2  $\frac{2 - 2(2.5^{n-1})}{1 - 2.5}$                       4  $\frac{1 - 2.5^{n-1}}{1 - 2.5}$

- 291 Jim is looking to buy a vacation home for \$172,600 near his favorite southern beach. The formula to compute a mortgage payment,  $M$ , is

$$M = P \cdot \frac{r(1+r)^N}{(1+r)^N - 1}$$

where  $P$  is the principal

amount of the loan,  $r$  is the monthly interest rate, and  $N$  is the number of monthly payments. Jim's bank offers a monthly interest rate of 0.305% for a 15-year mortgage. With no down payment, determine Jim's mortgage payment, rounded to the nearest dollar. Algebraically determine and state the down payment, rounded to the nearest dollar, that Jim needs to make in order for his mortgage payment to be \$1100.

- 292 The Wells family is looking to purchase a home in a suburb of Rochester with a 30-year mortgage that has an annual interest rate of 3.6%. The house the family wants to purchase is \$152,500 and they will make a \$15,250 down payment and borrow the remainder. Use the formula below to determine their monthly payment, to the nearest dollar.

$$M = \frac{P \left( \frac{r}{12} \right) \left( 1 + \frac{r}{12} \right)^n}{\left( 1 + \frac{r}{12} \right)^n - 1}$$

$M$  = monthly payment

$P$  = amount borrowed

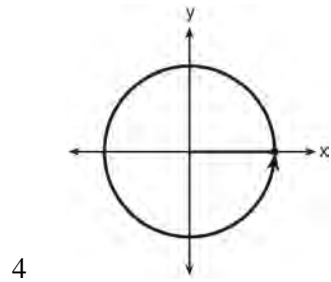
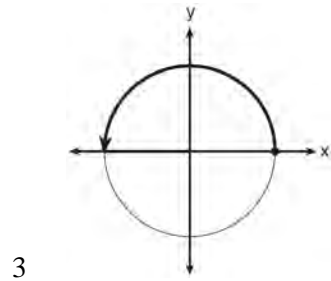
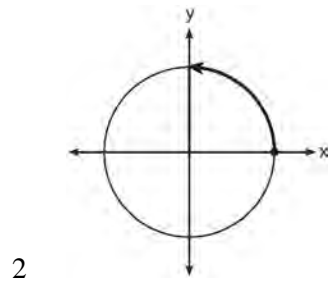
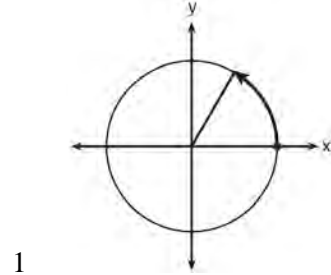
$r$  = annual interest rate

$n$  = total number of monthly payments

# TRIGONOMETRY

## F.TF.A.1-2: UNIT CIRCLE

293 Which diagram shows an angle rotation of 1 radian on the unit circle?



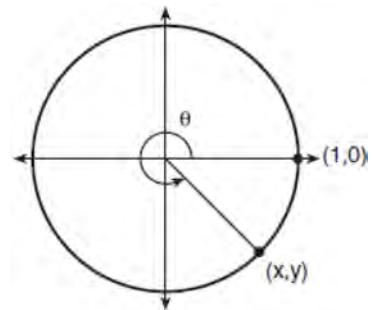
294 The terminal side of  $\theta$ , an angle in standard position, intersects the unit circle at  $P\left(-\frac{1}{3}, -\frac{\sqrt{8}}{3}\right)$ .

What is the value of  $\sec \theta$ ?

- 1  $-3$
- 2  $-\frac{3\sqrt{8}}{8}$
- 3  $-\frac{1}{3}$
- 4  $-\frac{\sqrt{8}}{3}$

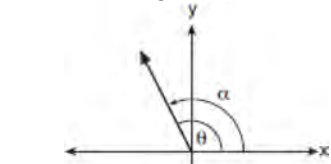
## F.TF.A.2: RECIPROCAL TRIGONOMETRIC FUNCTIONS

295 Using the unit circle below, explain why  $\csc \theta = \frac{1}{y}$ .

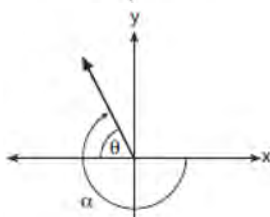


F.TF.A.2: REFERENCE ANGLES

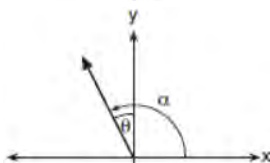
- 296 Which diagram represents an angle,  $\alpha$ , measuring  $\frac{13\pi}{20}$  radians drawn in standard position, and its reference angle,  $\theta$ ?



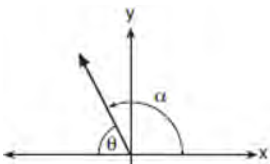
1



2



3



4

F.TF.A.2, F.TF.C.8: DETERMINING TRIGONOMETRIC FUNCTIONS

- 297 If the terminal side of angle  $\theta$ , in standard position, passes through point  $(-4,3)$ , what is the numerical value of  $\sin \theta$ ?

1  $\frac{3}{5}$

2  $\frac{4}{5}$

3  $-\frac{3}{5}$

4  $-\frac{4}{5}$

- 298 A circle centered at the origin has a radius of 10 units. The terminal side of an angle,  $\theta$ , intercepts the circle in Quadrant II at point  $C$ . The  $y$ -coordinate of point  $C$  is 8. What is the value of  $\cos \theta$ ?

1  $-\frac{3}{5}$

2  $-\frac{3}{4}$

3  $\frac{3}{5}$

4  $\frac{4}{5}$

- 299 The hours of daylight,  $y$ , in Utica in days,  $x$ , from January 1, 2013 can be modeled by the equation  $y = 3.06\sin(0.017x - 1.40) + 12.23$ . How many hours of daylight, to the *nearest tenth*, does this model predict for February 14, 2013?

1 9.4

2 10.4

3 12.1

4 12.2

300 An angle,  $\theta$ , is in standard position and its terminal side passes through the point  $(2, -1)$ . Find the *exact* value of  $\sin \theta$ .

301 Using the identity  $\sin^2 \theta + \cos^2 \theta = 1$ , find the value of  $\tan \theta$ , to the *nearest hundredth*, if  $\cos \theta$  is  $-0.7$  and  $\theta$  is in Quadrant II.

302 Given that  $\sin^2 \theta + \cos^2 \theta = 1$  and  $\sin \theta = -\frac{\sqrt{2}}{5}$ ,

what is a possible value of  $\cos \theta$ ?

1  $\frac{5 + \sqrt{2}}{5}$

2  $\frac{\sqrt{23}}{5}$

3  $\frac{3\sqrt{3}}{5}$

4  $\frac{\sqrt{35}}{5}$

303 Given  $\cos \theta = \frac{7}{25}$ , where  $\theta$  is an angle in standard

position terminating in quadrant IV, and

$\sin^2 \theta + \cos^2 \theta = 1$ , what is the value of  $\tan \theta$ ?

1  $-\frac{24}{25}$

2  $-\frac{24}{7}$

3  $\frac{24}{25}$

4  $\frac{24}{7}$

### F.TF.C.8: SIMPLIFYING TRIGONOMETRIC IDENTITIES

304 If  $\sin^2(32^\circ) + \cos^2(M) = 1$ , then  $M$  equals

1  $32^\circ$

2  $58^\circ$

3  $68^\circ$

4  $72^\circ$

### F.TF.B.5: MODELING TRIGONOMETRIC FUNCTIONS

305 The voltage used by most households can be modeled by a sine function. The maximum voltage is 120 volts, and there are 60 cycles *every second*. Which equation best represents the value of the voltage as it flows through the electric wires, where  $t$  is time in seconds?

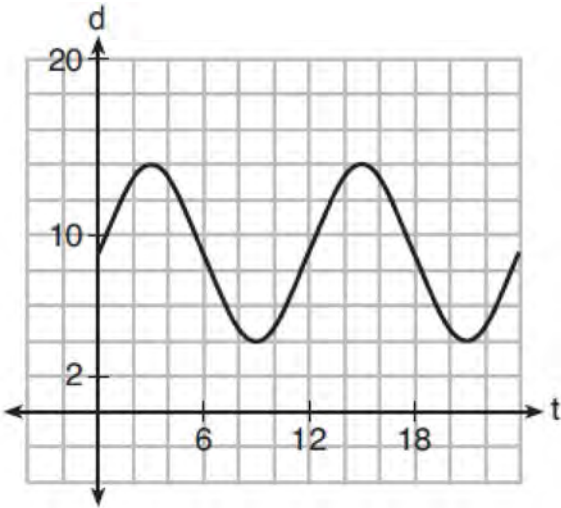
1  $V = 120 \sin(t)$

2  $V = 120 \sin(60t)$

3  $V = 120 \sin(60\pi t)$

4  $V = 120 \sin(120\pi t)$

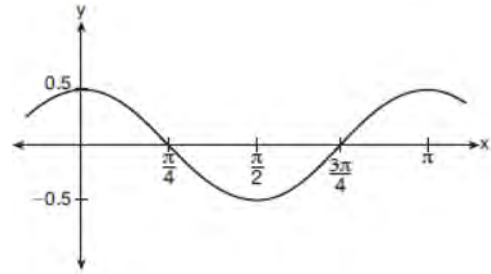
- 306 The depth of the water at a marker 20 feet from the shore in a bay is depicted in the graph below.



If the depth,  $d$ , is measured in feet and time,  $t$ , is measured in hours since midnight, what is an equation for the depth of the water at the marker?

- 1  $d = 5 \cos\left(\frac{\pi}{6} t\right) + 9$
- 2  $d = 9 \cos\left(\frac{\pi}{6} t\right) + 5$
- 3  $d = 9 \sin\left(\frac{\pi}{6} t\right) + 5$
- 4  $d = 5 \sin\left(\frac{\pi}{6} t\right) + 9$

- 307 Which equation is represented by the graph shown below?



- 1  $y = \frac{1}{2} \cos 2x$
- 2  $y = \cos x$
- 3  $y = \frac{1}{2} \cos x$
- 4  $y = 2 \cos \frac{1}{2} x$

F.IF.B.4, F.IF.C.7: GRAPHING TRIGONOMETRIC FUNCTIONS

- 308 The Ferris wheel at the landmark Navy Pier in Chicago takes 7 minutes to make one full rotation. The height,  $H$ , in feet, above the ground of one of the six-person cars can be modeled by

$$H(t) = 70 \sin\left(\frac{2\pi}{7}(t - 1.75)\right) + 80, \text{ where } t \text{ is time,}$$

in minutes. Using  $H(t)$  for one full rotation, this car's minimum height, in feet, is

- 1 150
- 2 70
- 3 10
- 4 0

- 309 A sine function increasing through the origin can be used to model light waves. Violet light has a wavelength of 400 nanometers. Over which interval is the height of the wave *decreasing*, only?
- (0,200)
  - (100,300)
  - (200,400)
  - (300,400)
- 310 Relative to the graph of  $y = 3 \sin x$ , what is the shift of the graph of  $y = 3 \sin\left(x + \frac{\pi}{3}\right)$ ?
- $\frac{\pi}{3}$  right
  - $\frac{\pi}{3}$  left
  - $\frac{\pi}{3}$  up
  - $\frac{\pi}{3}$  down
- 311 Given the parent function  $p(x) = \cos x$ , which phrase best describes the transformation used to obtain the graph of  $g(x) = \cos(x + a) - b$ , if  $a$  and  $b$  are positive constants?
- right  $a$  units, up  $b$  units
  - right  $a$  units, down  $b$  units
  - left  $a$  units, up  $b$  units
  - left  $a$  units, down  $b$  units
- 312 As  $x$  increases from 0 to  $\frac{\pi}{2}$ , the graph of the equation  $y = 2 \tan x$  will
- increase from 0 to 2
  - decrease from 0 to  $-2$
  - increase without limit
  - decrease without limit
- 313 Based on climate data that have been collected in Bar Harbor, Maine, the average monthly temperature, in degrees F, can be modeled by the equation  $B(x) = 23.914 \sin(0.508x - 2.116) + 55.300$ . The same governmental agency collected average monthly temperature data for Phoenix, Arizona, and found the temperatures could be modeled by the equation  $P(x) = 20.238 \sin(0.525x - 2.148) + 86.729$ . Which statement can *not* be concluded based on the average monthly temperature models  $x$  months after starting data collection?
- The average monthly temperature variation is more in Bar Harbor than in Phoenix.
  - The midline average monthly temperature for Bar Harbor is lower than the midline temperature for Phoenix.
  - The maximum average monthly temperature for Bar Harbor is  $79^\circ$  F, to the nearest degree.
  - The minimum average monthly temperature for Phoenix is  $20^\circ$  F, to the nearest degree.
- 314 The height,  $h(t)$  in cm, of a piston, is given by the equation  $h(t) = 12 \cos\left(\frac{\pi}{3}t\right) + 8$ , where  $t$  represents the number of seconds since the measurements began. Determine the average rate of change, in cm/sec, of the piston's height on the interval  $1 \leq t \leq 2$ . At what value(s) of  $t$ , to the *nearest tenth of a second*, does  $h(t) = 0$  in the interval  $1 \leq t \leq 5$ ? Justify your answer.

315 Which function's graph has a period of 8 and reaches a maximum height of 1 if at least one full period is graphed?

1  $y = -4 \cos\left(\frac{\pi}{4}x\right) - 3$

2  $y = -4 \cos\left(\frac{\pi}{4}x\right) + 5$

3  $y = -4 \cos(8x) - 3$

4  $y = -4 \cos(8x) + 5$

316 Which statement is *incorrect* for the graph of the function  $y = -3 \cos\left[\frac{\pi}{3}(x - 4)\right] + 7$ ?

1 The period is 6.

2 The amplitude is 3.

3 The range is [4,10].

4 The midline is  $y = -4$ .

317 The height above ground for a person riding a Ferris wheel after  $t$  seconds is modeled by

$$h(t) = 150 \sin\left(\frac{\pi}{45}t + 67.5\right) + 160 \text{ feet.}$$

How many seconds does it take to go from the bottom of the wheel to the top of the wheel?

1 10

2 45

3 90

4 150

318 The volume of air in a person's lungs, as the person breathes in and out, can be modeled by a sine graph. A scientist is studying the differences in this volume for people at rest compared to people told to take a deep breath. When examining the graphs, should the scientist focus on the amplitude, period, or midline? Explain your choice.

319 On the axes below, graph *one* cycle of a cosine function with amplitude 3, period  $\frac{\pi}{2}$ , midline  $y = -1$ , and passing through the point (0,2).

